

## Test Report

No. : CE/2018/10969A

Date : 2018/01/10

Page : 1 of 43

TOWERJAZZ SEMICONDUCTOR  
RAMAT GAVRIEL INDUSTRIAL AREA MIGDAL HAEMEK ISRAEL 23105



The following samples was/were submitted and identified by/on behalf of the applicant as :

Sample Submitted By : TOWERJAZZ SEMICONDUCTOR  
Sample Description : SILICON WAFERS  
Style/Item No. : 0.18 $\mu$  8INCH TOWERJAZZ MH FAB9 (CA18,CS18)  
Sample Receiving Date : 2018/01/04  
Testing Period : 2018/01/04 TO 2018/01/09

=====  
**Test Requested** :

- (1) As specified by client, with reference to RoHS 2011/65/EU Annex II and amending Directive (EU) 2015/863 to determine Cadmium, Lead, Mercury, Cr(VI), PBBs, PBDEs, DBP, BBP, DEHP, DIBP contents in the submitted sample(s).
- (2) Please refer to next pages for the other item(s).

**Test Result(s)** : Please refer to following pages.

**Conclusion** : (1) Based on the performed tests on submitted sample(s), the test results of Cadmium, Lead, Mercury, Cr(VI), PBBs, PBDEs, DBP, BBP, DEHP, DIBP comply with the limits as set by RoHS and amending Directive (EU) 2015/863.

  
Troy Chang, Manager - Tech  
Signed for and on behalf of  
SGS TAIWAN LTD.  
Chemical Laboratory - Taipei



# Test Report

No. : CE/2018/10969A

Date : 2018/01/10

Page : 2 of 43

TOWERJAZZ SEMICONDUCTOR  
RAMAT GAVRIEL INDUSTRIAL AREA MIGDAL HAEMEK ISRAEL 23105



## Test Result(s)

PART NAME No.1 : SILICON WAFERS

Test Item(s)	Unit	Method	MDL	Result	Limit
				No.1	
Cadmium (Cd)	mg/kg	With reference to IEC 62321-5 (2013) and performed by ICP-AES.	2	n.d.	100
Lead (Pb)	mg/kg		2	n.d.	1000
Mercury (Hg)	mg/kg	With reference to IEC 62321-4 (2013) and performed by ICP-AES.	2	n.d.	1000
Hexavalent Chromium Cr(VI)	mg/kg	With reference to IEC 62321-7-2 (2017) and performed by UV-VIS.	8	n.d.	1000
<b>Sum of PBBs</b>	mg/kg	With reference to IEC 62321-6 (2015) and performed by GC/MS.	-	n.d.	1000
Monobromobiphenyl	mg/kg		5	n.d.	-
Dibromobiphenyl	mg/kg		5	n.d.	-
Tribromobiphenyl	mg/kg		5	n.d.	-
Tetrabromobiphenyl	mg/kg		5	n.d.	-
Pentabromobiphenyl	mg/kg		5	n.d.	-
Hexabromobiphenyl	mg/kg		5	n.d.	-
Heptabromobiphenyl	mg/kg		5	n.d.	-
Octabromobiphenyl	mg/kg		5	n.d.	-
Nonabromobiphenyl	mg/kg		5	n.d.	-
Decabromobiphenyl	mg/kg		5	n.d.	-
<b>Sum of PBDEs</b>	mg/kg		-	n.d.	1000
Monobromodiphenyl ether	mg/kg		5	n.d.	-
Dibromodiphenyl ether	mg/kg		5	n.d.	-
Tribromodiphenyl ether	mg/kg		5	n.d.	-
Tetrabromodiphenyl ether	mg/kg		5	n.d.	-
Pentabromodiphenyl ether	mg/kg		5	n.d.	-
Hexabromodiphenyl ether	mg/kg		5	n.d.	-
Heptabromodiphenyl ether	mg/kg		5	n.d.	-
Octabromodiphenyl ether	mg/kg		5	n.d.	-
Nonabromodiphenyl ether	mg/kg	5	n.d.	-	
Decabromodiphenyl ether	mg/kg	5	n.d.	-	

This document is issued by the Company subject to its General Conditions of Service printed overleaf, available on request or accessible at <http://www.sgs.com/en/Terms-and-Conditions.aspx> and, for electronic format documents, subject to Terms and Conditions for Electronic Documents at <http://www.sgs.com/en/Terms-and-Conditions/Termse-Document.aspx>. Attention is drawn to the limitation of liability, indemnification and jurisdiction issues defined therein. Any holder of this document is advised that information contained hereon reflects the Company's findings at the time of its intervention only and within the limits of client's instruction, if any. The Company's sole responsibility is to its Client and this document does not exonerate parties to a transaction from exercising all their rights and obligations under the transaction documents. This document cannot be reproduced, except in full, without prior written approval of the Company. Any unauthorized alteration, forgery or falsification of the content or appearance of this document is unlawful and offenders may be prosecuted to the fullest extent of the law. Unless otherwise stated the results shown in this test report refer only to the sample(s) tested.

# Test Report

No. : CE/2018/10969A

Date : 2018/01/10

Page : 3 of 43

TOWERJAZZ SEMICONDUCTOR  
RAMAT GAVRIEL INDUSTRIAL AREA MIGDAL HAEMEK ISRAEL 23105



Test Item(s)	Unit	Method	MDL	Result	Limit
				No.1	
Polychlorinated Biphenyls (PCBs) (CAS No.: 1336-36-3)	mg/kg	With reference to US EPA 3550C (2007). Analysis was performed by GC/MS.	0.5	n.d.	-
Polychlorinated Terphenyls (PCTs)	mg/kg	With reference to US EPA 3550C (2007). Analysis was performed by GC/MS.	0.5	n.d.	-
Polychlorinated Naphthalene (PCNs)	mg/kg	With reference to US EPA 3550C (2007). Analysis was performed by GC/MS.	5	n.d.	-
Alkanes, C10-13, chloro (Short Chain Chlorinated Paraffins) (CAS No.: 85535-84-8)	mg/kg	With reference to US EPA 3550C (2007). Analysis was performed by GC/MS.	100	n.d.	-
<b>Asbestos</b>					
Chrysotile (CAS No.: 12001-29-5)	%	With reference to EPA 600/R-93/116 (1993). Analysis was performed by Stereo Microscope (SM), Dispersion Staining Polarized Light Microscope (DS-PLM) and X- ray Diffraction Spectrometer (XRD).	-	Negative	-
Amosite (CAS No.: 12172-73-5)	%		-	Negative	-
Crocidolite (CAS No.: 12001-28-4)	%		-	Negative	-
Anthophyllite (CAS No.: 77536-67-5)	%		-	Negative	-
Tremolite (CAS No.: 77536-68-6)	%		-	Negative	-
Actinolite (CAS No.: 77536-66-4)	%		-	Negative	-
<b>AZO</b>					
1): 4-AMINODIPHENYL (CAS No.: 92-67-1)	mg/kg	With reference to LFGB 82.02-2 (2013). Analysis was performed by GC/MS.	3	n.d.	-
2): BENZIDINE (CAS No.: 92-87- 5)	mg/kg	With reference to LFGB 82.02-2 (2013). Analysis was performed by GC/MS.	3	n.d.	-
3): 4-CHLORO-O-TOLUIDINE (CAS No.: 95-69-2)	mg/kg	With reference to LFGB 82.02-2 (2013). Analysis was performed by GC/MS.	3	n.d.	-
4): 2-NAPHTHYLAMINE (CAS No.: 91-59-8)	mg/kg	With reference to LFGB 82.02-2 (2013). Analysis was performed by GC/MS.	3	n.d.	-
5): O-AMINOAZOTOLUENE (CAS No.: 97-56-3)	mg/kg	With reference to LFGB 82.02-2 (2013). Analysis was performed by GC/MS.	3	n.d.	-
6): 2-AMINO-4-NITROTOLUENE (CAS No.: 99-55-8)	mg/kg	With reference to LFGB 82.02-2 (2013). Analysis was performed by GC/MS.	3	n.d.	-
7): P-CHLOROANILINE (CAS No.: 106-47-8)	mg/kg	With reference to LFGB 82.02-2 (2013). Analysis was performed by GC/MS.	3	n.d.	-
8): 2,4-DIAMINOANISOLE (CAS No.: 615-05-4)	mg/kg	With reference to LFGB 82.02-2 (2013). Analysis was performed by GC/MS.	3	n.d.	-

This document is issued by the Company subject to its General Conditions of Service printed overleaf, available on request or accessible at <http://www.sgs.com/en/Terms-and-Conditions.aspx> and, for electronic format documents, subject to Terms and Conditions for Electronic Documents at <http://www.sgs.com/en/Terms-and-Conditions/Termse-Document.aspx>. Attention is drawn to the limitation of liability, indemnification and jurisdiction issues defined therein. Any holder of this document is advised that information contained hereon reflects the Company's findings at the time of its intervention only and within the limits of client's instruction, if any. The Company's sole responsibility is to its Client and this document does not exonerate parties to a transaction from exercising all their rights and obligations under the transaction documents. This document cannot be reproduced, except in full, without prior written approval of the Company. Any unauthorized alteration, forgery or falsification of the content or appearance of this document is unlawful and offenders may be prosecuted to the fullest extent of the law. Unless otherwise stated the results shown in this test report refer only to the sample(s) tested.

# Test Report

No. : CE/2018/10969A

Date : 2018/01/10

Page : 4 of 43

TOWERJAZZ SEMICONDUCTOR  
RAMAT GAVRIEL INDUSTRIAL AREA MIGDAL HAEMEK ISRAEL 23105



Test Item(s)	Unit	Method	MDL	Result	Limit
				No.1	
9): 4,4'-DIAMINODIPHENYLMETHANE (CAS No.: 101-77-9)	mg/kg	With reference to LFGB 82.02-2 (2013). Analysis was performed by GC/MS.	3	n.d.	-
10): 3,3'-DICHLOOROBENZIDINE (CAS No.: 91-94-1)	mg/kg	With reference to LFGB 82.02-2 (2013). Analysis was performed by GC/MS.	3	n.d.	-
11): 3,3'-DIMETHOXYBENZIDINE (CAS No.: 119-90-4)	mg/kg	With reference to LFGB 82.02-2 (2013). Analysis was performed by GC/MS.	3	n.d.	-
12): 3,3'-DIMETHYLBENZIDINE (CAS No.: 119-93-7)	mg/kg	With reference to LFGB 82.02-2 (2013). Analysis was performed by GC/MS.	3	n.d.	-
13): 3,3'-DIMETHYL-4,4'-DIAMINODIPHENYLMETHANE (CAS No.: 838-88-0)	mg/kg	With reference to LFGB 82.02-2 (2013). Analysis was performed by GC/MS.	3	n.d.	-
14): P-CRESIDINE (2-METHOXY-5-METHYLANILINE) (CAS No.: 120-71-8)	mg/kg	With reference to LFGB 82.02-2 (2013). Analysis was performed by GC/MS.	3	n.d.	-
15): 4,4'-METHYLENE-BIS-(2-CHLOROANILINE) (CAS No.: 101-14-4)	mg/kg	With reference to LFGB 82.02-2 (2013). Analysis was performed by GC/MS.	3	n.d.	-
16): 4,4'-OXYDIANILINE (CAS No.: 101-80-4)	mg/kg	With reference to LFGB 82.02-2 (2013). Analysis was performed by GC/MS.	3	n.d.	-
17): 4,4'-THIODIANILINE (CAS No.: 139-65-1)	mg/kg	With reference to LFGB 82.02-2 (2013). Analysis was performed by GC/MS.	3	n.d.	-
18): O-TOLUIDINE (CAS No.: 95-53-4)	mg/kg	With reference to LFGB 82.02-2 (2013). Analysis was performed by GC/MS.	3	n.d.	-
19): 2,4-TOLUYLENEDIAMINE (CAS No.: 95-80-7)	mg/kg	With reference to LFGB 82.02-2 (2013). Analysis was performed by GC/MS.	3	n.d.	-
20): 2,4,5-TRIMETHYLANILINE (CAS No.: 137-17-7)	mg/kg	With reference to LFGB 82.02-2 (2013). Analysis was performed by GC/MS.	3	n.d.	-
21): O-ANISIDINE (CAS No.: 90-04-0)	mg/kg	With reference to LFGB 82.02-2 (2013). Analysis was performed by GC/MS.	3	n.d.	-
22): 4-AMINOAZOBENZENE (CAS No.: 60-09-3)	mg/kg	With reference to LFGB 82.02-2 (2013). Analysis was performed by GC/MS.	3	n.d.	-
23): 2,4-XYLIDINE (CAS No.: 95-68-1)	mg/kg	With reference to LFGB 82.02-2 (2013). Analysis was performed by GC/MS.	3	n.d.	-

This document is issued by the Company subject to its General Conditions of Service printed overleaf, available on request or accessible at <http://www.sgs.com/en/Terms-and-Conditions.aspx> and, for electronic format documents, subject to Terms and Conditions for Electronic Documents at <http://www.sgs.com/en/Terms-and-Conditions/Termse-Documents.aspx>. Attention is drawn to the limitation of liability, indemnification and jurisdiction issues defined therein. Any holder of this document is advised that information contained hereon reflects the Company's findings at the time of its intervention only and within the limits of client's instruction, if any. The Company's sole responsibility is to its Client and this document does not exonerate parties to a transaction from exercising all their rights and obligations under the transaction documents. This document cannot be reproduced, except in full, without prior written approval of the Company. Any unauthorized alteration, forgery or falsification of the content or appearance of this document is unlawful and offenders may be prosecuted to the fullest extent of the law. Unless otherwise stated the results shown in this test report refer only to the sample(s) tested.

# Test Report

No. : CE/2018/10969A

Date : 2018/01/10

Page : 5 of 43

TOWERJAZZ SEMICONDUCTOR  
RAMAT GAVRIEL INDUSTRIAL AREA MIGDAL HAEMEK ISRAEL 23105



Test Item(s)	Unit	Method	MDL	Result	Limit
				No.1	
24): 2,6-XYLIDINE (CAS No.: 87-62-7)	mg/kg	With reference to LFGB 82.02-2 (2013). Analysis was performed by GC/MS.	3	n.d.	-
Arsenic (As)	mg/kg	With reference to US EPA 3052 (1996). Analysis was performed by ICP-AES.	2	n.d.	-
Diarsenic pentaoxide*** (CAS No.: 1303-28-2)	mg/kg	With reference to US EPA 3052: 1996. Analyzed by ICP-AES.***	-	n.d.	-
Diarsenic trioxide*** (CAS No.: 1327-53-3)	mg/kg	With reference to US EPA 3052: 1996. Analyzed by ICP-AES.***	-	n.d.	-
Formaldehyde (CAS No.: 50-00-0)	mg/kg	With reference to ISO 17226-1(2008). Analysis was performed by HPLC/DAD.	3	n.d.	-
Hexabromocyclododecane (HBCDD) and all major diastereoisomers identified ( $\alpha$ -HBCDD, $\beta$ -HBCDD, $\gamma$ -HBCDD) (CAS No.: 25637-99-4 and 3194-55-6 (134237-51-7, 134237-50-6, 134237-52-8))	mg/kg	With reference to IEC 62321 (2008). Analysis was performed by GC/MS.	5	n.d.	-
Perchlorate (CAS No.: 14797-73-0)	mg/kg	Analysis was performed by IC.	0.1	n.d.	-
Perfluorooctane sulfonates (PFOS-Acid, Metal Salt, Amide)	mg/kg	With reference to US EPA 3550C (2007). Analysis was performed by LC/MS.	10	n.d.	-
2- (3,5-di-tert-butyl-2-hydroxyphenyl)-2H-benzotriazole (CAS No.: 3846-71-7)	mg/kg	With reference to US EPA 3540C (1996). Analysis was performed by GC/MS.	5	n.d.	-
DBP (Dibutyl phthalate) (CAS No.: 84-74-2)	mg/kg	With reference to IEC 62321-8 (2017). Analysis was performed by GC/MS.	50	n.d.	1000
DEHP (Di- (2-ethylhexyl) phthalate) (CAS No.: 117-81-7)	mg/kg	With reference to IEC 62321-8 (2017). Analysis was performed by GC/MS.	50	n.d.	1000
DNOP (Di-n-octyl phthalate) (CAS No.: 117-84-0)	mg/kg	With reference to IEC 62321-8 (2017). Analysis was performed by GC/MS.	50	n.d.	-
DINP (Di-isononyl phthalate) (CAS No.: 28553-12-0; 68515-48-0)	mg/kg	With reference to IEC 62321-8 (2017). Analysis was performed by GC/MS.	50	n.d.	-
DIDP (Di-isodecyl phthalate) (CAS No.: 26761-40-0; 68515-49-1)	mg/kg	With reference to IEC 62321-8 (2017). Analysis was performed by GC/MS.	50	n.d.	-

This document is issued by the Company subject to its General Conditions of Service printed overleaf, available on request or accessible at <http://www.sgs.com/en/Terms-and-Conditions.aspx> and, for electronic format documents, subject to Terms and Conditions for Electronic Documents at <http://www.sgs.com/en/Terms-and-Conditions/Termse-Documents.aspx>. Attention is drawn to the limitation of liability, indemnification and jurisdiction issues defined therein. Any holder of this document is advised that information contained hereon reflects the Company's findings at the time of its intervention only and within the limits of client's instruction, if any. The Company's sole responsibility is to its Client and this document does not exonerate parties to a transaction from exercising all their rights and obligations under the transaction documents. This document cannot be reproduced, except in full, without prior written approval of the Company. Any unauthorized alteration, forgery or falsification of the content or appearance of this document is unlawful and offenders may be prosecuted to the fullest extent of the law. Unless otherwise stated the results shown in this test report refer only to the sample(s) tested.

# Test Report

No. : CE/2018/10969A

Date : 2018/01/10

Page : 6 of 43

TOWERJAZZ SEMICONDUCTOR  
RAMAT GAVRIEL INDUSTRIAL AREA MIGDAL HAEMEK ISRAEL 23105



Test Item(s)	Unit	Method	MDL	Result	Limit
				No.1	
BBP (Butyl Benzyl phthalate) (CAS No.: 85-68-7)	mg/kg	With reference to IEC 62321-8 (2017). Analysis was performed by GC/MS.	50	n.d.	1000
DIBP (Di-isobutyl phthalate) (CAS No.: 84-69-5)	mg/kg	With reference to IEC 62321-8 (2017). Analysis was performed by GC/MS.	50	n.d.	1000
DIHP (1,2-Benzenedicarboxylic acid, di-C6-8-branched alkyl esters, C7-rich) (CAS No.: 71888- 89-6)	mg/kg	With reference to IEC 62321-8 (2017). Analysis was performed by GC/MS.	50	n.d.	-
DHNUP (1,2- Benzenedicarboxylic acid, di-C7- 11-branched and linear alkyl esters) (CAS No.: 68515-42-4)	mg/kg	With reference to IEC 62321-8 (2017). Analysis was performed by GC/MS.	50	n.d.	-
DMEP (Bis (2-methoxyethyl) phthalate) (CAS No.: 117-82-8)	mg/kg	With reference to IEC 62321-8 (2017). Analysis was performed by GC/MS.	50	n.d.	-
Tributyl Tin (TBT)	mg/kg	With reference to ISO 17353 (2004). Analysis was performed by GC/FPD.	0.03	n.d.	-
Diphenyltin	mg/kg	With reference to ISO 17353 (2004). Analysis was performed by GC/FPD.	0.03	n.d.	-
Bis(tributyltin)oxide (TBTO)*** (CAS No.: 56-35-9)	mg/kg	With reference to ISO 17353 (2004). Analysis was performed by GC/FPD.	-	n.d.	-
Dibutyl Tin (DBT)	mg/kg	With reference to ISO 17353 (2004). Analysis was performed by GC/FPD.	0.03	n.d.	-
Diocetyl Tin (DOT)	mg/kg	With reference to ISO 17353 (2004). Analysis was performed by GC/FPD.	0.03	n.d.	-
Bromomethane (CAS No.: 74-83- 9)	mg/kg	With reference to US EPA 5021A (2014). Analysis was performed by GC/MS.	1	n.d.	-
Dimethyl Fumarate (CAS No.: 624-49-7)	mg/kg	With reference to US EPA 3550C (2007). Analysis was performed by GC/MS.	0.1	n.d.	-
Cobalt dichloride (CAS No.: 7646-79-9)	mg/kg	SGS In-House method-RSTS-EE-SVHC-007. Analyzed by ICP-AES.	50	n.d.	-
Cobalt (Co)	mg/kg	With reference to US EPA 3052 (1996). Analysis was performed by ICP-AES.	2	31.9	-

This document is issued by the Company subject to its General Conditions of Service printed overleaf, available on request or accessible at <http://www.sgs.com/en/Terms-and-Conditions.aspx> and, for electronic format documents, subject to Terms and Conditions for Electronic Documents at <http://www.sgs.com/en/Terms-and-Conditions/Termse-Document.aspx>. Attention is drawn to the limitation of liability, indemnification and jurisdiction issues defined therein. Any holder of this document is advised that information contained hereon reflects the Company's findings at the time of its intervention only and within the limits of client's instruction, if any. The Company's sole responsibility is to its Client and this document does not exonerate parties to a transaction from exercising all their rights and obligations under the transaction documents. This document cannot be reproduced, except in full, without prior written approval of the Company. Any unauthorized alteration, forgery or falsification of the content or appearance of this document is unlawful and offenders may be prosecuted to the fullest extent of the law. Unless otherwise stated the results shown in this test report refer only to the sample(s) tested.

# Test Report

No. : CE/2018/10969A

Date : 2018/01/10

Page : 7 of 43

TOWERJAZZ SEMICONDUCTOR  
RAMAT GAVRIEL INDUSTRIAL AREA MIGDAL HAEMEK ISRAEL 23105



Test Item(s)	Unit	Method	MDL	Result	Limit
				No.1	
Hexavalent Chromium Cr(VI)	mg/kg	SGS In-House method-RSTS-EE-SVHC-007. Analyzed by UV-Vis.	50	n.d.	-
Strontium chromate*** (CAS No.: 7789-06-2)	mg/kg	SGS In-House method-RSTS-EE-SVHC-007. Analyzed by UV-VIS.***	-	n.d.	-
Potassium hydroxyoctaoxidizincatedi-chromate*** (CAS No.: 11103-86-9)	mg/kg	SGS In-House method-RSTS-EE-SVHC-007. Analyzed by UV-VIS.***	-	n.d.	-
Pentazinc chromate octahydroxide*** (CAS No.: 49663-84-5)	mg/kg	SGS In-House method-RSTS-EE-SVHC-007. Analyzed by UV-VIS.***	-	n.d.	-
Lead chromate*** (CAS No.: 7758-97-6) (※5)	mg/kg	SGS In-House method-RSTS-EE-SVHC-007. Analyzed by UV-VIS, ICP-AES.	-	n.d.	-
Lead chromate molybdate sulphate red (C.I. Pigment Red 104)*** (CAS No.: 12656-85-8)	mg/kg	SGS In-House method-RSTS-EE-SVHC-007. Analyzed by UV-VIS, ICP-AES.	-	n.d.	-
Lead sulfochromate yellow (C.I. Pigment Yellow 34)*** (CAS No.: 1344-37-2) (※5)	mg/kg	SGS In-House method-RSTS-EE-SVHC-007. Analyzed by UV-VIS, ICP-AES.	-	n.d.	-
Lead (Pb)	mg/kg	SGS In-House method-RSTS-EE-SVHC-007. Analyzed by ICP-AES.	50	n.d.	-
Tris (2-chloroethyl) phosphate (TCEP) (CAS No.: 115-96-8)	mg/kg	With reference to US EPA 3550C (2007). Analysis was performed by GC/MS.	5	n.d.	-
Boron (B) (※2)	mg/kg	SGS In-House method-RSTS-EE-SVHC-007. Analyzed by ICP-AES.	50	n.d.	-
Boric acid*** (CAS No.: 10043-35-3; 11113-50-1)	mg/kg	SGS In-House method-RSTS-EE-SVHC-007. Analyzed by ICP-AES.***	-	n.d.	-
Disodium tetraborate, anhydrous*** (CAS No.: 1303-96-4, 1330-43-4, 12179-04-3)	mg/kg	SGS In-House method-RSTS-EE-SVHC-007. Analyzed by ICP-AES.***	-	n.d.	-
Tetraboron disodium heptaoxide, hydrate (CAS No.: 12267-73-1) (* 2)	mg/kg	SGS In-House method-RSTS-EE-SVHC-007. Analyzed by ICP-AES.	-	n.d.	-
Bis(2-methoxyethyl) ether (CAS No.: 111-96-6)	mg/kg	SGS In-House method-RSTS-EE-SVHC-007. Analyzed by GC/MS.	500	n.d.	-

This document is issued by the Company subject to its General Conditions of Service printed overleaf, available on request or accessible at <http://www.sgs.com/en/Terms-and-Conditions.aspx> and, for electronic format documents, subject to Terms and Conditions for Electronic Documents at <http://www.sgs.com/en/Terms-and-Conditions/Termse-Documents.aspx>. Attention is drawn to the limitation of liability, indemnification and jurisdiction issues defined therein. Any holder of this document is advised that information contained hereon reflects the Company's findings at the time of its intervention only and within the limits of client's instruction, if any. The Company's sole responsibility is to its Client and this document does not exonerate parties to a transaction from exercising all their rights and obligations under the transaction documents. This document cannot be reproduced, except in full, without prior written approval of the Company. Any unauthorized alteration, forgery or falsification of the content or appearance of this document is unlawful and offenders may be prosecuted to the fullest extent of the law. Unless otherwise stated the results shown in this test report refer only to the sample(s) tested.

# Test Report

No. : CE/2018/10969A

Date : 2018/01/10

Page : 8 of 43

TOWERJAZZ SEMICONDUCTOR  
RAMAT GAVRIEL INDUSTRIAL AREA MIGDAL HAEMEK ISRAEL 23105



Test Item(s)	Unit	Method	MDL	Result	Limit
				No.1	
N,N-dimethylacetamide (DMAC) (CAS No.: 127-19-5)	mg/kg	With reference to US EPA 3550C (2007). Analysis was performed by GC/MS.	10	n.d.	-
4-(1,1,3,3-tetramethylbutyl) phenol, (4-tert-Octylphenol) (CAS No.: 140-66-9)	mg/kg	With reference to US EPA 3550C (2007). Analysis was performed by GC/MS.	50	n.d.	-
Beryllium (Be)	mg/kg	With reference to US EPA 3052 (1996). Analysis was performed by ICP-AES.	2	n.d.	-
Hexabromobenzene	mg/kg	With reference to US EPA 3550C (2007). Analysis was performed by GC/MS.	5	n.d.	-
Brominated styrene	mg/kg	With reference to US EPA 3550C (2007). Analysis was performed by GC/MS.	5	n.d.	-
TBBP-A-bis (CAS No.: 21850-44- 2)	mg/kg	With reference to US EPA 3550C (2007). Analysis was performed by GC/MS.	5	n.d.	-
Tetrabromobisphenol A (TBBP-A) (CAS No.: 79-94-7)	mg/kg	With reference to Global SOP RSTS-E&E- 121 (2012). Analysis was performed by LC/MS.	10	n.d.	-
Monomethyl dibromodiphenyl methane (DBBT)	mg/kg	With reference to US EPA 3550C (2007). Analysis was performed by GC/MS.	0.5	n.d.	-
PCDE	mg/kg	With reference to US EPA 3550C (2007). Analysis was performed by GC/MS.	0.5	n.d.	-
Monomethyl dichlorodiphenyl methane (Ugilec121)	mg/kg	With reference to US EPA 3550C (2007). Analysis was performed by GC/MS.	0.5	n.d.	-
Monomethyl tetrachlorodiphenyl methane (Ugilec141)	mg/kg	With reference to US EPA 3550C (2007). Analysis was performed by GC/MS.	0.5	n.d.	-
PVC	**	Analysis was performed by FTIR and FLAME Test.	-	Negative	-
Antimony (Sb)	mg/kg	With reference to US EPA 3052 (1996). Analysis was performed by ICP-AES.	2	n.d.	-
Aluminosilicate, Refractory Ceramic Fibres 【oxides of aluminium and silicon are the main components present (in the fibres) within variable concentration ranges】	mg/kg	SGS In-House method-RSTS-EE-SVHC-007. Analyzed by gravimetric method, ICP-AES.	500	n.d.	-

This document is issued by the Company subject to its General Conditions of Service printed overleaf, available on request or accessible at <http://www.sgs.com/en/Terms-and-Conditions.aspx> and, for electronic format documents, subject to Terms and Conditions for Electronic Documents at <http://www.sgs.com/en/Terms-and-Conditions/Termse-Documents.aspx>. Attention is drawn to the limitation of liability, indemnification and jurisdiction issues defined therein. Any holder of this document is advised that information contained hereon reflects the Company's findings at the time of its intervention only and within the limits of client's instruction, if any. The Company's sole responsibility is to its Client and this document does not exonerate parties to a transaction from exercising all their rights and obligations under the transaction documents. This document cannot be reproduced, except in full, without prior written approval of the Company. Any unauthorized alteration, forgery or falsification of the content or appearance of this document is unlawful and offenders may be prosecuted to the fullest extent of the law. Unless otherwise stated the results shown in this test report refer only to the sample(s) tested.



# Test Report

No. : CE/2018/10969A

Date : 2018/01/10

Page : 9 of 43

TOWERJAZZ SEMICONDUCTOR  
RAMAT GAVRIEL INDUSTRIAL AREA MIGDAL HAEMEK ISRAEL 23105



Test Item(s)	Unit	Method	MDL	Result	Limit
				No.1	
Zirconia Aluminosilicate, Refractory Ceramic Fibres 【oxides of aluminium, silicon and zirconium are the main components present (in the fibres) within variable concentration ranges】	mg/kg	SGS In-House method-RSTS-EE-SVHC-007. Analyzed by gravimetric method, ICP-AES.	500	n.d.	-
<b>Halogen</b>					
Halogen-Fluorine (F) (CAS No.: 14762-94-8)	mg/kg	With reference to BS EN 14582 (2016). Analysis was performed by IC.	50	n.d.	-
Halogen-Chlorine (Cl) (CAS No.: 22537-15-1)	mg/kg	With reference to BS EN 14582 (2016). Analysis was performed by IC.	50	n.d.	-
Halogen-Bromine (Br) (CAS No.: 10097-32-2)	mg/kg	With reference to BS EN 14582 (2016). Analysis was performed by IC.	50	n.d.	-
Halogen-Iodine (I) (CAS No.: 14362-44-8)	mg/kg	With reference to BS EN 14582 (2016). Analysis was performed by IC.	50	n.d.	-
<b>CFC's (Chlorofluorocarbons)</b>					
Group I					
Chlorofluorocarbon-11 (CAS No.: 75-69-4)	mg/kg	With reference to US EPA 5021A (2014). Analysis was performed by GC/MS.	1	n.d.	-
Chlorofluorocarbon-12 (CAS No.: 75-71-8)	mg/kg	With reference to US EPA 5021A (2014). Analysis was performed by GC/MS.	1	n.d.	-
Chlorofluorocarbon-113 (CAS No.: 76-13-1)	mg/kg	With reference to US EPA 5021A (2014). Analysis was performed by GC/MS.	1	n.d.	-
Chlorofluorocarbon-114 (CAS No.: 76-14-2)	mg/kg	With reference to US EPA 5021A (2014). Analysis was performed by GC/MS.	1	n.d.	-
Chlorofluorocarbon-115 (CAS No.: 76-15-3)	mg/kg	With reference to US EPA 5021A (2014). Analysis was performed by GC/MS.	1	n.d.	-
Group III					
Chlorofluorocarbon-13 (CAS No.: 75-72-9)	mg/kg	With reference to US EPA 5021A (2014). Analysis was performed by GC/MS.	1	n.d.	-
Chlorofluorocarbon-111 (CAS No.: 354-56-3)	mg/kg	With reference to US EPA 5021A (2014). Analysis was performed by GC/MS.	1	n.d.	-

This document is issued by the Company subject to its General Conditions of Service printed overleaf, available on request or accessible at <http://www.sgs.com/en/Terms-and-Conditions.aspx> and, for electronic format documents, subject to Terms and Conditions for Electronic Documents at <http://www.sgs.com/en/Terms-and-Conditions/Termse-Documents.aspx>. Attention is drawn to the limitation of liability, indemnification and jurisdiction issues defined therein. Any holder of this document is advised that information contained hereon reflects the Company's findings at the time of its intervention only and within the limits of client's instruction, if any. The Company's sole responsibility is to its Client and this document does not exonerate parties to a transaction from exercising all their rights and obligations under the transaction documents. This document cannot be reproduced, except in full, without prior written approval of the Company. Any unauthorized alteration, forgery or falsification of the content or appearance of this document is unlawful and offenders may be prosecuted to the fullest extent of the law. Unless otherwise stated the results shown in this test report refer only to the sample(s) tested.

# Test Report

No. : CE/2018/10969A

Date : 2018/01/10

Page : 10 of 43

TOWERJAZZ SEMICONDUCTOR  
RAMAT GAVRIEL INDUSTRIAL AREA MIGDAL HAEMEK ISRAEL 23105



Test Item(s)	Unit	Method	MDL	Result	Limit
				No.1	
Chlorofluorocarbon-112 (CAS No.: 76-12-0)	mg/kg	With reference to US EPA 5021A (2014). Analysis was performed by GC/MS.	1	n.d.	-
Chlorofluorocarbon-211 (CAS No.: 422-78-6)	mg/kg	With reference to US EPA 5021A (2014). Analysis was performed by GC/MS.	1	n.d.	-
Chlorofluorocarbon-212 (CAS No.: 3182-26-1)	mg/kg	With reference to US EPA 5021A (2014). Analysis was performed by GC/MS.	1	n.d.	-
Chlorofluorocarbon-213 (CAS No.: 2354-06-5)	mg/kg	With reference to US EPA 5021A (2014). Analysis was performed by GC/MS.	1	n.d.	-
Chlorofluorocarbon-214 (CAS No.: 29255-31-0)	mg/kg	With reference to US EPA 5021A (2014). Analysis was performed by GC/MS.	1	n.d.	-
Chlorofluorocarbon-215 (CAS No.: 4259-43-2)	mg/kg	With reference to US EPA 5021A (2014). Analysis was performed by GC/MS.	1	n.d.	-
Chlorofluorocarbon-216 (CAS No.: 661-97-2)	mg/kg	With reference to US EPA 5021A (2014). Analysis was performed by GC/MS.	1	n.d.	-
Chlorofluorocarbon-217 (CAS No.: 422-86-6)	mg/kg	With reference to US EPA 5021A (2014). Analysis was performed by GC/MS.	1	n.d.	-
<b>HCFCs (Hydrochlorofluorocarbons)</b>					
HCFC-21 (CAS No.: 75-43-4)	mg/kg	With reference to US EPA 5021A (2014). Analysis was performed by GC/MS.	1	n.d.	-
HCFC-22 (CAS No.: 75-45-6)	mg/kg	With reference to US EPA 5021A (2014). Analysis was performed by GC/MS.	1	n.d.	-
HCFC-31 (CAS No.: 593-70-4)	mg/kg	With reference to US EPA 5021A (2014). Analysis was performed by GC/MS.	1	n.d.	-
HCFC-121 (CAS No.: 354-14-3)	mg/kg	With reference to US EPA 5021A (2014). Analysis was performed by GC/MS.	1	n.d.	-
HCFC-122 (CAS No.: 354-21-2)	mg/kg	With reference to US EPA 5021A (2014). Analysis was performed by GC/MS.	1	n.d.	-
HCFC-123 (CAS No.: 306-83-2)	mg/kg	With reference to US EPA 5021A (2014). Analysis was performed by GC/MS.	1	n.d.	-
HCFC-124 (CAS No.: 2837-89-0)	mg/kg	With reference to US EPA 5021A (2014). Analysis was performed by GC/MS.	1	n.d.	-
HCFC-131 (CAS No.: 359-28-4)	mg/kg	With reference to US EPA 5021A (2014). Analysis was performed by GC/MS.	1	n.d.	-

This document is issued by the Company subject to its General Conditions of Service printed overleaf, available on request or accessible at <http://www.sgs.com/en/Terms-and-Conditions.aspx> and, for electronic format documents, subject to Terms and Conditions for Electronic Documents at <http://www.sgs.com/en/Terms-and-Conditions/Termse-Document.aspx>. Attention is drawn to the limitation of liability, indemnification and jurisdiction issues defined therein. Any holder of this document is advised that information contained hereon reflects the Company's findings at the time of its intervention only and within the limits of client's instruction, if any. The Company's sole responsibility is to its Client and this document does not exonerate parties to a transaction from exercising all their rights and obligations under the transaction documents. This document cannot be reproduced, except in full, without prior written approval of the Company. Any unauthorized alteration, forgery or falsification of the content or appearance of this document is unlawful and offenders may be prosecuted to the fullest extent of the law. Unless otherwise stated the results shown in this test report refer only to the sample(s) tested.

# Test Report

No. : CE/2018/10969A

Date : 2018/01/10

Page : 11 of 43

TOWERJAZZ SEMICONDUCTOR  
RAMAT GAVRIEL INDUSTRIAL AREA MIGDAL HAEMEK ISRAEL 23105



Test Item(s)	Unit	Method	MDL	Result	Limit
				No.1	
HCFC-132b (CAS No.: 1649-08-7)	mg/kg	With reference to US EPA 5021A (2014). Analysis was performed by GC/MS.	1	n.d.	-
HCFC-133a (CAS No.: 75-88-7)	mg/kg	With reference to US EPA 5021A (2014). Analysis was performed by GC/MS.	1	n.d.	-
HCFC-141b (CAS No.: 1717-00-6)	mg/kg	With reference to US EPA 5021A (2014). Analysis was performed by GC/MS.	1	n.d.	-
HCFC-142b (CAS No.: 75-68-3)	mg/kg	With reference to US EPA 5021A (2014). Analysis was performed by GC/MS.	1	n.d.	-
HCFC-221 (CAS No.: 422-26-4)	mg/kg	With reference to US EPA 5021A (2014). Analysis was performed by GC/MS.	1	n.d.	-
HCFC-222 (CAS No.: 422-49-1)	mg/kg	With reference to US EPA 5021A (2014). Analysis was performed by GC/MS.	1	n.d.	-
HCFC-223 (CAS No.: 422-52-6)	mg/kg	With reference to US EPA 5021A (2014). Analysis was performed by GC/MS.	1	n.d.	-
HCFC-224 (CAS No.: 422-54-8)	mg/kg	With reference to US EPA 5021A (2014). Analysis was performed by GC/MS.	1	n.d.	-
HCFC-225ca (CAS No.: 422-56-0)	mg/kg	With reference to US EPA 5021A (2014). Analysis was performed by GC/MS.	1	n.d.	-
HCFC-225cb (CAS No.: 507-55-1)	mg/kg	With reference to US EPA 5021A (2014). Analysis was performed by GC/MS.	1	n.d.	-
HCFC-226 (CAS No.: 431-87-8)	mg/kg	With reference to US EPA 5021A (2014). Analysis was performed by GC/MS.	1	n.d.	-
HCFC-231 (CAS No.: 421-94-3)	mg/kg	With reference to US EPA 5021A (2014). Analysis was performed by GC/MS.	1	n.d.	-
HCFC-232 (CAS No.: 460-89-9)	mg/kg	With reference to US EPA 5021A (2014). Analysis was performed by GC/MS.	1	n.d.	-
HCFC-233 (CAS No.: 7125-84-0)	mg/kg	With reference to US EPA 5021A (2014). Analysis was performed by GC/MS.	1	n.d.	-
HCFC-234 (CAS No.: 425-94-5)	mg/kg	With reference to US EPA 5021A (2014). Analysis was performed by GC/MS.	1	n.d.	-
HCFC-235 (CAS No.: 460-92-4)	mg/kg	With reference to US EPA 5021A (2014). Analysis was performed by GC/MS.	1	n.d.	-
HCFC-241 (CAS No.: 666-27-3)	mg/kg	With reference to US EPA 5021A (2014). Analysis was performed by GC/MS.	1	n.d.	-

This document is issued by the Company subject to its General Conditions of Service printed overleaf, available on request or accessible at <http://www.sgs.com/en/Terms-and-Conditions.aspx> and, for electronic format documents, subject to Terms and Conditions for Electronic Documents at <http://www.sgs.com/en/Terms-and-Conditions/Termse-Document.aspx>. Attention is drawn to the limitation of liability, indemnification and jurisdiction issues defined therein. Any holder of this document is advised that information contained hereon reflects the Company's findings at the time of its intervention only and within the limits of client's instruction, if any. The Company's sole responsibility is to its Client and this document does not exonerate parties to a transaction from exercising all their rights and obligations under the transaction documents. This document cannot be reproduced, except in full, without prior written approval of the Company. Any unauthorized alteration, forgery or falsification of the content or appearance of this document is unlawful and offenders may be prosecuted to the fullest extent of the law. Unless otherwise stated the results shown in this test report refer only to the sample(s) tested.

# Test Report

No. : CE/2018/10969A

Date : 2018/01/10

Page : 12 of 43

TOWERJAZZ SEMICONDUCTOR  
RAMAT GAVRIEL INDUSTRIAL AREA MIGDAL HAEMEK ISRAEL 23105



Test Item(s)	Unit	Method	MDL	Result	Limit
				No.1	
HCFC-242 (CAS No.: 460-63-9)	mg/kg	With reference to US EPA 5021A (2014). Analysis was performed by GC/MS.	1	n.d.	-
HCFC-243 (CAS No.: 460-69-5)	mg/kg	With reference to US EPA 5021A (2014). Analysis was performed by GC/MS.	1	n.d.	-
HCFC-244	mg/kg	With reference to US EPA 5021A (2014). Analysis was performed by GC/MS.	1	n.d.	-
HCFC-251 (CAS No.: 421-41-0)	mg/kg	With reference to US EPA 5021A (2014). Analysis was performed by GC/MS.	1	n.d.	-
HCFC-252 (CAS No.: 819-00-1)	mg/kg	With reference to US EPA 5021A (2014). Analysis was performed by GC/MS.	1	n.d.	-
HCFC-253 (CAS No.: 460-35-5)	mg/kg	With reference to US EPA 5021A (2014). Analysis was performed by GC/MS.	1	n.d.	-
HCFC-261 (CAS No.: 420-97-3)	mg/kg	With reference to US EPA 5021A (2014). Analysis was performed by GC/MS.	1	n.d.	-
HCFC-262 (CAS No.: 421-02-03)	mg/kg	With reference to US EPA 5021A (2014). Analysis was performed by GC/MS.	1	n.d.	-
HCFC-271 (CAS No.: 430-55-7)	mg/kg	With reference to US EPA 5021A (2014). Analysis was performed by GC/MS.	1	n.d.	-
<b>Halons</b>					
Halon-1211 (CAS No.: 353-59-3)	mg/kg	With reference to US EPA 5021A (2014). Analysis was performed by GC/MS.	1	n.d.	-
Halon-1301 (CAS No.: 75-63-8)	mg/kg	With reference to US EPA 5021A (2014). Analysis was performed by GC/MS.	1	n.d.	-
Halon-2402 (CAS No.: 124-73-2)	mg/kg	With reference to US EPA 5021A (2014). Analysis was performed by GC/MS.	1	n.d.	-
<b>HBFCs (Hydrobromofluorocarbons)</b>					
HBFC-21B2 (CHFBr <sub>2</sub> ) (CAS No.: 1868-53-7)	mg/kg	With reference to US EPA 5021A (2014). Analysis was performed by GC/MS.	1	n.d.	-
HBFC-22B1 (CHF <sub>2</sub> Br) (CAS No.: 1511-62-2)	mg/kg	With reference to US EPA 5021A (2014). Analysis was performed by GC/MS.	1	n.d.	-
HBFC-31B1 (CH <sub>2</sub> FBr) (CAS No.: 373-52-4)	mg/kg	With reference to US EPA 5021A (2014). Analysis was performed by GC/MS.	1	n.d.	-

This document is issued by the Company subject to its General Conditions of Service printed overleaf, available on request or accessible at <http://www.sgs.com/en/Terms-and-Conditions.aspx> and, for electronic format documents, subject to Terms and Conditions for Electronic Documents at <http://www.sgs.com/en/Terms-and-Conditions/Termse-Document.aspx>. Attention is drawn to the limitation of liability, indemnification and jurisdiction issues defined therein. Any holder of this document is advised that information contained hereon reflects the Company's findings at the time of its intervention only and within the limits of client's instruction, if any. The Company's sole responsibility is to its Client and this document does not exonerate parties to a transaction from exercising all their rights and obligations under the transaction documents. This document cannot be reproduced, except in full, without prior written approval of the Company. Any unauthorized alteration, forgery or falsification of the content or appearance of this document is unlawful and offenders may be prosecuted to the fullest extent of the law. Unless otherwise stated the results shown in this test report refer only to the sample(s) tested.

# Test Report

No. : CE/2018/10969A

Date : 2018/01/10

Page : 13 of 43

TOWERJAZZ SEMICONDUCTOR  
RAMAT GAVRIEL INDUSTRIAL AREA MIGDAL HAEMEK ISRAEL 23105



Test Item(s)	Unit	Method	MDL	Result	Limit
				No.1	
HBFC-121B4 (C2HFBr4)	mg/kg	With reference to US EPA 5021A (2014). Analysis was performed by GC/MS.	1	n.d.	-
HBFC-122B3 (C2HF2Br3)	mg/kg	With reference to US EPA 5021A (2014). Analysis was performed by GC/MS.	1	n.d.	-
HBFC-123B2 (C2HF3Br2)	mg/kg	With reference to US EPA 5021A (2014). Analysis was performed by GC/MS.	1	n.d.	-
HBFC-124B1 (C2HF4Br)	mg/kg	With reference to US EPA 5021A (2014). Analysis was performed by GC/MS.	1	n.d.	-
HBFC-131B3 (C2H2FBr3)	mg/kg	With reference to US EPA 5021A (2014). Analysis was performed by GC/MS.	1	n.d.	-
HBFC-132B2 (C2H2F2Br2)	mg/kg	With reference to US EPA 5021A (2014). Analysis was performed by GC/MS.	1	n.d.	-
HBFC-133B1 (C2H2F3Br)	mg/kg	With reference to US EPA 5021A (2014). Analysis was performed by GC/MS.	1	n.d.	-
HBFC-141B2 (C2H3FBr2)	mg/kg	With reference to US EPA 5021A (2014). Analysis was performed by GC/MS.	1	n.d.	-
HBFC-142B1 (C2H3F2Br)	mg/kg	With reference to US EPA 5021A (2014). Analysis was performed by GC/MS.	1	n.d.	-
HBFC-151B1 (C2H4FBr)	mg/kg	With reference to US EPA 5021A (2014). Analysis was performed by GC/MS.	1	n.d.	-
HBFC-221B6 (C3HFBr6)	mg/kg	With reference to US EPA 5021A (2014). Analysis was performed by GC/MS.	1	n.d.	-
HBFC-222B5 (C3HF2Br5)	mg/kg	With reference to US EPA 5021A (2014). Analysis was performed by GC/MS.	1	n.d.	-
HBFC-223B4 (C3HF3Br4)	mg/kg	With reference to US EPA 5021A (2014). Analysis was performed by GC/MS.	1	n.d.	-
HBFC-224B3 (C3HF4Br3)	mg/kg	With reference to US EPA 5021A (2014). Analysis was performed by GC/MS.	1	n.d.	-
HBFC-225B2 (C3HF5Br2)	mg/kg	With reference to US EPA 5021A (2014). Analysis was performed by GC/MS.	1	n.d.	-
HBFC-226B1 (C3HF6Br)	mg/kg	With reference to US EPA 5021A (2014). Analysis was performed by GC/MS.	1	n.d.	-
HBFC-231B5 (C3H2FBr5)	mg/kg	With reference to US EPA 5021A (2014). Analysis was performed by GC/MS.	1	n.d.	-

This document is issued by the Company subject to its General Conditions of Service printed overleaf, available on request or accessible at <http://www.sgs.com/en/Terms-and-Conditions.aspx> and, for electronic format documents, subject to Terms and Conditions for Electronic Documents at <http://www.sgs.com/en/Terms-and-Conditions/Termse-Documents.aspx>. Attention is drawn to the limitation of liability, indemnification and jurisdiction issues defined therein. Any holder of this document is advised that information contained hereon reflects the Company's findings at the time of its intervention only and within the limits of client's instruction, if any. The Company's sole responsibility is to its Client and this document does not exonerate parties to a transaction from exercising all their rights and obligations under the transaction documents. This document cannot be reproduced, except in full, without prior written approval of the Company. Any unauthorized alteration, forgery or falsification of the content or appearance of this document is unlawful and offenders may be prosecuted to the fullest extent of the law. Unless otherwise stated the results shown in this test report refer only to the sample(s) tested.

# Test Report

No. : CE/2018/10969A

Date : 2018/01/10

Page : 14 of 43

TOWERJAZZ SEMICONDUCTOR  
RAMAT GAVRIEL INDUSTRIAL AREA MIGDAL HAEMEK ISRAEL 23105



Test Item(s)	Unit	Method	MDL	Result	Limit
				No.1	
HBFC-232B4 (C3H2F2Br4)	mg/kg	With reference to US EPA 5021A (2014). Analysis was performed by GC/MS.	1	n.d.	-
HBFC-233B3 (C3H2F3Br3)	mg/kg	With reference to US EPA 5021A (2014). Analysis was performed by GC/MS.	1	n.d.	-
HBFC-234B2 (C3H2F4Br2)	mg/kg	With reference to US EPA 5021A (2014). Analysis was performed by GC/MS.	1	n.d.	-
HBFC-235B1 (C3H2F5Br)	mg/kg	With reference to US EPA 5021A (2014). Analysis was performed by GC/MS.	1	n.d.	-
HBFC-241B4 (C3H3FBr4)	mg/kg	With reference to US EPA 5021A (2014). Analysis was performed by GC/MS.	1	n.d.	-
HBFC-242B3 (C3H3F2Br3)	mg/kg	With reference to US EPA 5021A (2014). Analysis was performed by GC/MS.	1	n.d.	-
HBFC-243B2 (C3H3F3Br2)	mg/kg	With reference to US EPA 5021A (2014). Analysis was performed by GC/MS.	1	n.d.	-
HBFC-244B1 (C3H3F4Br)	mg/kg	With reference to US EPA 5021A (2014). Analysis was performed by GC/MS.	1	n.d.	-
HBFC-251B3 (C3H4FBr3)	mg/kg	With reference to US EPA 5021A (2014). Analysis was performed by GC/MS.	1	n.d.	-
HBFC-252B2 (C3H4F2Br2)	mg/kg	With reference to US EPA 5021A (2014). Analysis was performed by GC/MS.	1	n.d.	-
HBFC-253B1 (C3H4F3Br)	mg/kg	With reference to US EPA 5021A (2014). Analysis was performed by GC/MS.	1	n.d.	-
HBFC-261B2 (C3H5FBr2)	mg/kg	With reference to US EPA 5021A (2014). Analysis was performed by GC/MS.	1	n.d.	-
HBFC-262B1 (C3H5F2Br)	mg/kg	With reference to US EPA 5021A (2014). Analysis was performed by GC/MS.	1	n.d.	-
HBFC-271B1 (C3H6FBr)	mg/kg	With reference to US EPA 5021A (2014). Analysis was performed by GC/MS.	1	n.d.	-
<b>HFCs (Hydrofluorocarbon)</b>					
HFC-23 (CHF3) (CAS No.: 75-46-7)	mg/kg	With reference to US EPA 5021A (2014). Analysis was performed by GC/MS.	1	n.d.	-
HFC-32 (CH2F2) (CAS No.: 75-10-5)	mg/kg	With reference to US EPA 5021A (2014). Analysis was performed by GC/MS.	1	n.d.	-

This document is issued by the Company subject to its General Conditions of Service printed overleaf, available on request or accessible at <http://www.sgs.com/en/Terms-and-Conditions.aspx> and, for electronic format documents, subject to Terms and Conditions for Electronic Documents at <http://www.sgs.com/en/Terms-and-Conditions/Termse-Documents.aspx>. Attention is drawn to the limitation of liability, indemnification and jurisdiction issues defined therein. Any holder of this document is advised that information contained hereon reflects the Company's findings at the time of its intervention only and within the limits of client's instruction, if any. The Company's sole responsibility is to its Client and this document does not exonerate parties to a transaction from exercising all their rights and obligations under the transaction documents. This document cannot be reproduced, except in full, without prior written approval of the Company. Any unauthorized alteration, forgery or falsification of the content or appearance of this document is unlawful and offenders may be prosecuted to the fullest extent of the law. Unless otherwise stated the results shown in this test report refer only to the sample(s) tested.

# Test Report

No. : CE/2018/10969A

Date : 2018/01/10

Page : 15 of 43

TOWERJAZZ SEMICONDUCTOR  
RAMAT GAVRIEL INDUSTRIAL AREA MIGDAL HAEMEK ISRAEL 23105



Test Item(s)	Unit	Method	MDL	Result	Limit
				No.1	
HFC-41 (CH3F) (CAS No.: 593-53-3)	mg/kg	With reference to US EPA 5021A (2014). Analysis was performed by GC/MS.	1	n.d.	-
HFC-43-10mee (C5H2F10)	mg/kg	With reference to US EPA 5021A (2014). Analysis was performed by GC/MS.	1	n.d.	-
HFC-125 (C2HF5)	mg/kg	With reference to US EPA 5021A (2014). Analysis was performed by GC/MS.	1	n.d.	-
HFC-134 (C2H2F4)	mg/kg	With reference to US EPA 5021A (2014). Analysis was performed by GC/MS.	1	n.d.	-
HFC-134a (CH2FCF3) (CAS No.: 811-97-2)	mg/kg	With reference to US EPA 5021A (2014). Analysis was performed by GC/MS.	1	n.d.	-
HFC-143 (CH3F3)	mg/kg	With reference to US EPA 5021A (2014). Analysis was performed by GC/MS.	1	n.d.	-
HFC-143a (CH3F3)	mg/kg	With reference to US EPA 5021A (2014). Analysis was performed by GC/MS.	1	n.d.	-
HFC-152a (C2H4F2) (CAS No.: 75-37-6)	mg/kg	With reference to US EPA 5021A (2014). Analysis was performed by GC/MS.	1	n.d.	-
HFC-227ea (C3HF7) (CAS No.: 431-89-0)	mg/kg	With reference to US EPA 5021A (2014). Analysis was performed by GC/MS.	1	n.d.	-
HFC-236fa (C3H2F6)	mg/kg	With reference to US EPA 5021A (2014). Analysis was performed by GC/MS.	1	n.d.	-
HFC-236ea (C3H2F6) (CAS No.: 431-63-0)	mg/kg	With reference to US EPA 5021A (2014). Analysis was performed by GC/MS.	1	n.d.	-
HFC-245ca (C3H3F5)	mg/kg	With reference to US EPA 5021A (2014). Analysis was performed by GC/MS.	1	n.d.	-
HFC-245fa (C3H3F5)	mg/kg	With reference to US EPA 5021A (2014). Analysis was performed by GC/MS.	1	n.d.	-
HFC-365mfc (C4H5F5)	mg/kg	With reference to US EPA 5021A (2014). Analysis was performed by GC/MS.	1	n.d.	-
<b>PFCs (Perfluorocarbon)</b>					
F14 (CAS No.: 75-73-0)	mg/kg	With reference to US EPA 5021A (2014). Analysis was performed by GC/MS.	1	n.d.	-
Fluorocarbon 116 (CAS No.: 76-16-4)	mg/kg	With reference to US EPA 5021A (2014). Analysis was performed by GC/MS.	1	n.d.	-

This document is issued by the Company subject to its General Conditions of Service printed overleaf, available on request or accessible at <http://www.sgs.com/en/Terms-and-Conditions.aspx> and, for electronic format documents, subject to Terms and Conditions for Electronic Documents at <http://www.sgs.com/en/Terms-and-Conditions/Termse-Documents.aspx>. Attention is drawn to the limitation of liability, indemnification and jurisdiction issues defined therein. Any holder of this document is advised that information contained hereon reflects the Company's findings at the time of its intervention only and within the limits of client's instruction, if any. The Company's sole responsibility is to its Client and this document does not exonerate parties to a transaction from exercising all their rights and obligations under the transaction documents. This document cannot be reproduced, except in full, without prior written approval of the Company. Any unauthorized alteration, forgery or falsification of the content or appearance of this document is unlawful and offenders may be prosecuted to the fullest extent of the law. Unless otherwise stated the results shown in this test report refer only to the sample(s) tested.

# Test Report

No. : CE/2018/10969A

Date : 2018/01/10

Page : 16 of 43

TOWERJAZZ SEMICONDUCTOR  
RAMAT GAVRIEL INDUSTRIAL AREA MIGDAL HAEMEK ISRAEL 23105



Test Item(s)	Unit	Method	MDL	Result	Limit
				No.1	
Freon 218 (CAS No.: 76-19-7)	mg/kg	With reference to US EPA 5021A (2014). Analysis was performed by GC/MS.	1	n.d.	-
Decafluorobutane (CAS No.: 355-25-9)	mg/kg	With reference to US EPA 5021A (2014). Analysis was performed by GC/MS.	1	n.d.	-
Freon C318 (CAS No.: 115-25-3)	mg/kg	With reference to US EPA 5021A (2014). Analysis was performed by GC/MS.	1	n.d.	-
Perfluor-1-butene (CAS No.: 357-26-6)	mg/kg	With reference to US EPA 5021A (2014). Analysis was performed by GC/MS.	1	n.d.	-
perfluorisobutene (CAS No.: 382-21-8)	mg/kg	With reference to US EPA 5021A (2014). Analysis was performed by GC/MS.	1	n.d.	-
1,4-dihydrooctafluorobutane (CAS No.: 377-36-6)	mg/kg	With reference to US EPA 5021A (2014). Analysis was performed by GC/MS.	1	n.d.	-
Nonafluor-2- (trifluoromethyl) butane (CAS No.: 594-91-2)	mg/kg	With reference to US EPA 5021A (2014). Analysis was performed by GC/MS.	1	n.d.	-
Perfluoro-n-pentane (CAS No.: 678-26-2)	mg/kg	With reference to US EPA 5021A (2014). Analysis was performed by GC/MS.	1	n.d.	-
2-perfluoromethylpentane (CAS No.: 355-04-4)	mg/kg	With reference to US EPA 5021A (2014). Analysis was performed by GC/MS.	1	n.d.	-
Perfluorohexane (CAS No.: 355-42-0)	mg/kg	With reference to US EPA 5021A (2014). Analysis was performed by GC/MS.	1	n.d.	-
<b>CHCs (Chlorinate hydrocarbon)</b>					
1,1,1,2-Tetrachloroethane (CAS No.: 630-20-6)	mg/kg	With reference to US EPA 5021A (2014). Analysis was performed by GC/MS.	1	n.d.	-
1,1,1-Trichloroethane (CAS No.: 71-55-6)	mg/kg	With reference to US EPA 5021A (2014). Analysis was performed by GC/MS.	1	n.d.	-
1,1,2,2-Tetrachloroethane (CAS No.: 79-34-5)	mg/kg	With reference to US EPA 5021A (2014). Analysis was performed by GC/MS.	1	n.d.	-
1,1,2-Trichloroethane (CAS No.: 79-00-5)	mg/kg	With reference to US EPA 5021A (2014). Analysis was performed by GC/MS.	1	n.d.	-
1,1-Dichloroethane (CAS No.: 75-34-3)	mg/kg	With reference to US EPA 5021A (2014). Analysis was performed by GC/MS.	1	n.d.	-
1,1-Dichloroethene (CAS No.: 75-35-4)	mg/kg	With reference to US EPA 5021A (2014). Analysis was performed by GC/MS.	1	n.d.	-

This document is issued by the Company subject to its General Conditions of Service printed overleaf, available on request or accessible at <http://www.sgs.com/en/Terms-and-Conditions.aspx> and, for electronic format documents, subject to Terms and Conditions for Electronic Documents at <http://www.sgs.com/en/Terms-and-Conditions/Termse-Document.aspx>. Attention is drawn to the limitation of liability, indemnification and jurisdiction issues defined therein. Any holder of this document is advised that information contained hereon reflects the Company's findings at the time of its intervention only and within the limits of client's instruction, if any. The Company's sole responsibility is to its Client and this document does not exonerate parties to a transaction from exercising all their rights and obligations under the transaction documents. This document cannot be reproduced, except in full, without prior written approval of the Company. Any unauthorized alteration, forgery or falsification of the content or appearance of this document is unlawful and offenders may be prosecuted to the fullest extent of the law. Unless otherwise stated the results shown in this test report refer only to the sample(s) tested.



# Test Report

No. : CE/2018/10969A

Date : 2018/01/10

Page : 17 of 43

TOWERJAZZ SEMICONDUCTOR  
RAMAT GAVRIEL INDUSTRIAL AREA MIGDAL HAEMEK ISRAEL 23105



Test Item(s)	Unit	Method	MDL	Result	Limit
				No.1	
1,1-Dichloropropene (CAS No.: 563-58-6)	mg/kg	With reference to US EPA 5021A (2014). Analysis was performed by GC/MS.	1	n.d.	-
1,2,3-Trichloropropane (CAS No.: 96-18-4)	mg/kg	With reference to US EPA 5021A (2014). Analysis was performed by GC/MS.	1	n.d.	-
1,2-Dichloroethane (CAS No.: 107-06-2)	mg/kg	With reference to US EPA 5021A (2014). Analysis was performed by GC/MS.	1	n.d.	-
1,2-Dichloropropane (CAS No.: 78-87-5)	mg/kg	With reference to US EPA 5021A (2014). Analysis was performed by GC/MS.	1	n.d.	-
1,3-Dichloropropane (CAS No.: 142-28-9)	mg/kg	With reference to US EPA 5021A (2014). Analysis was performed by GC/MS.	1	n.d.	-
2,2-Dichloropropane (CAS No.: 594-20-7)	mg/kg	With reference to US EPA 5021A (2014). Analysis was performed by GC/MS.	1	n.d.	-
Carbon tetrachloride (CAS No.: 56-23-5)	mg/kg	With reference to US EPA 5021A (2014). Analysis was performed by GC/MS.	1	n.d.	-
Chloroethane (CAS No.: 75-00-3)	mg/kg	With reference to US EPA 5021A (2014). Analysis was performed by GC/MS.	1	n.d.	-
Chloroform (CAS No.: 67-66-3)	mg/kg	With reference to US EPA 5021A (2014). Analysis was performed by GC/MS.	1	n.d.	-
Chloromethane (CAS No.: 74-87-3)	mg/kg	With reference to US EPA 5021A (2014). Analysis was performed by GC/MS.	1	n.d.	-
cis-1,2-Dichloroethene (CAS No.: 156-59-2)	mg/kg	With reference to US EPA 5021A (2014). Analysis was performed by GC/MS.	1	n.d.	-
cis-1,3-Dichloropropene (CAS No.: 10061-01-5)	mg/kg	With reference to US EPA 5021A (2014). Analysis was performed by GC/MS.	1	n.d.	-
Hexachlorobutadiene (CAS No.: 87-68-3)	mg/kg	With reference to US EPA 5021A (2014). Analysis was performed by GC/MS.	1	n.d.	-
Methylene Chloride (CAS No.: 75-09-2)	mg/kg	With reference to US EPA 5021A (2014). Analysis was performed by GC/MS.	1	n.d.	-
Tetrachloroethene (CAS No.: 127-18-4)	mg/kg	With reference to US EPA 5021A (2014). Analysis was performed by GC/MS.	1	n.d.	-
trans-1,2-Dichloroethene (CAS No.: 156-60-5)	mg/kg	With reference to US EPA 5021A (2014). Analysis was performed by GC/MS.	1	n.d.	-
trans-1,3-Dichloropropene (CAS No.: 10061-02-6)	mg/kg	With reference to US EPA 5021A (2014). Analysis was performed by GC/MS.	1	n.d.	-

This document is issued by the Company subject to its General Conditions of Service printed overleaf, available on request or accessible at <http://www.sgs.com/en/Terms-and-Conditions.aspx> and, for electronic format documents, subject to Terms and Conditions for Electronic Documents at <http://www.sgs.com/en/Terms-and-Conditions/Termse-Document.aspx>. Attention is drawn to the limitation of liability, indemnification and jurisdiction issues defined therein. Any holder of this document is advised that information contained hereon reflects the Company's findings at the time of its intervention only and within the limits of client's instruction, if any. The Company's sole responsibility is to its Client and this document does not exonerate parties to a transaction from exercising all their rights and obligations under the transaction documents. This document cannot be reproduced, except in full, without prior written approval of the Company. Any unauthorized alteration, forgery or falsification of the content or appearance of this document is unlawful and offenders may be prosecuted to the fullest extent of the law. Unless otherwise stated the results shown in this test report refer only to the sample(s) tested.

# Test Report

No. : CE/2018/10969A

Date : 2018/01/10

Page : 18 of 43

TOWERJAZZ SEMICONDUCTOR  
RAMAT GAVRIEL INDUSTRIAL AREA MIGDAL HAEMEK ISRAEL 23105



Test Item(s)	Unit	Method	MDL	Result	Limit
				No.1	
Trichloroethylene (CAS No.: 79-01-6)	mg/kg	With reference to US EPA 5021A (2014). Analysis was performed by GC/MS.	1	n.d.	-
Sulfur Hexafluoride (SF6) (CAS No.: 2551-62-4)	mg/kg	With reference to US EPA 5021A (2014). Analysis was performed by GC/MS.	1	n.d.	-
Uranium (U) (Radioactive element) (CAS No.: 7440-61-1)	mg/kg	With reference to US EPA 3052 (1996) & 6020B (2014). Analysis was performed by ICP-MS.	1	n.d.	-
Thorium (Th) (Radioactive element) (CAS No.: 7440-29-1)	mg/kg	With reference to US EPA 3052 (1996) & 6020B (2014). Analysis was performed by ICP-MS.	1	n.d.	-
Strontium (Sr) (Radioactive element) (CAS No.: 7440-24-6)	mg/kg	With reference to US EPA 3052 (1996) & 6020B (2014). Analysis was performed by ICP-MS.	1	n.d.	-
Caesium (Cs) (Radioactive element) (CAS No.: 7440-46-2)	mg/kg	With reference to US EPA 3052 (1996) & 6020B (2014). Analysis was performed by ICP-MS.	1	n.d.	-
Red phosphorus	**	Analysis was performed by Pyrolyzer-GC/MS.	-	Negative	-

## Note :

1. mg/kg = ppm ; 0.1wt% = 1000ppm
2. MDL = Method Detection Limit
3. n.d. = Not Detected = less than MDL
4. " - " = Not Regulated
5. \*\* = Qualitative analysis (No Unit)
6. Negative = Undetectable / Positive = Detectable
7. Testing range of asbestos qualitative analysis is from less than 0.1% to 100%. The judgment criterion: asbestos fibers being found is shown as "Positive"; asbestos fibers not being found is shown as "Negative".
8. \*\*\*: The substance was calculated by the test results of Tributyl Tin (TBT) or element (Ex. Arsenic, Boron, Cr(VI) respectively). The MDL was evaluated for Tributyl Tin (TBT) or element (Ex. Arsenic, Boron, Cr(VI) respectively).
9. Parameter Conversion Table : Please refer to [http://twap.sgs.com/sgsrsts/chn/download-REACH\\_tw.asp](http://twap.sgs.com/sgsrsts/chn/download-REACH_tw.asp)

## Test Report

No. : CE/2018/10969A

Date : 2018/01/10

Page : 19 of 43

TOWERJAZZ SEMICONDUCTOR  
RAMAT GAVRIEL INDUSTRIAL AREA MIGDAL HAEMEK ISRAEL 23105



10. (※5): Regarding the compound containing Cr(VI) and lead, lead and Cr(VI) are tested and respectively used for the calculation of the independent concentration of the compound containing Cr(VI) and lead. The minimum value of the two independently calculated concentrations is used as the final concentration for the report.
11. (\*2): Tetraboron disodium heptaoxide, hydrate: Only anhydrous form of disodium tetraborate is relevant and considered according to ECHA explanation (Ref no.: INC 000000032519).

### PFOS Reference Information : POPs - (EU) 757/2010

Outlawing PFOS as substances or preparations in concentrations above 0.001% (10ppm), in semi-finished products or articles or parts at a level above 0.1%(1000ppm), in textiles or other coated materials above 1µg/m<sup>2</sup>.

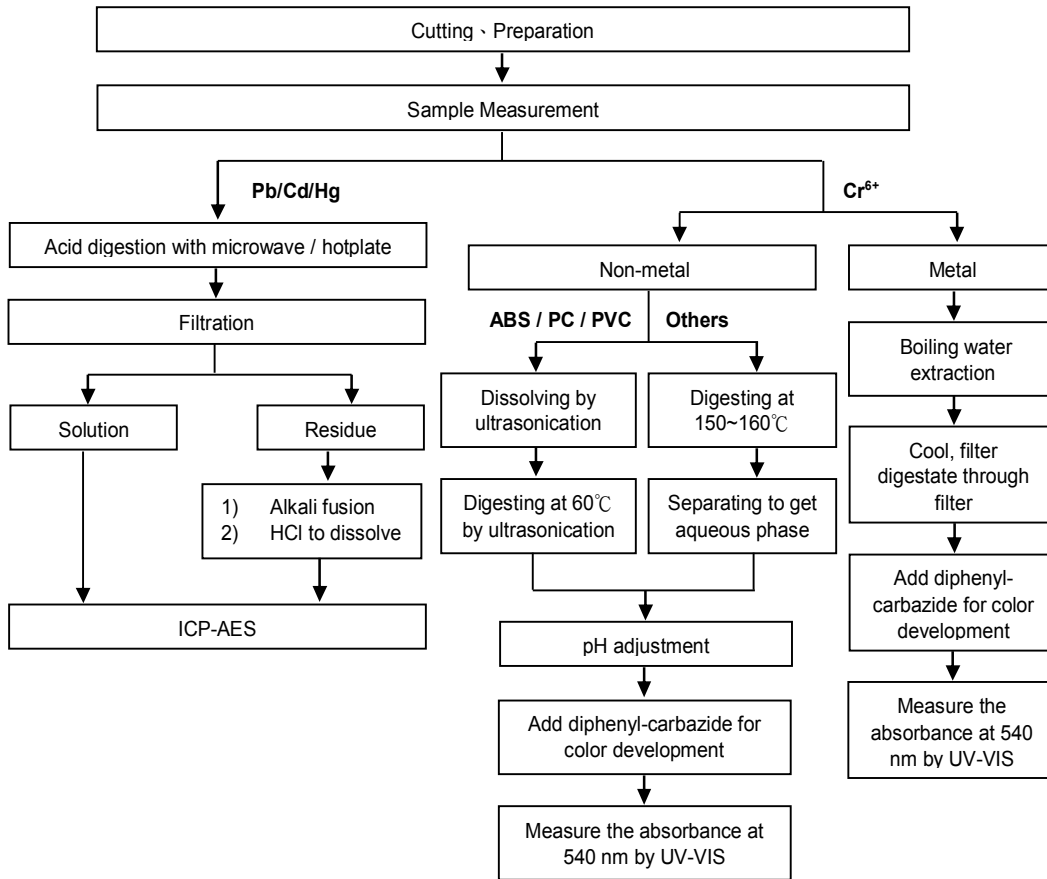
TOWERJAZZ SEMICONDUCTOR  
 RAMAT GAVRIEL INDUSTRIAL AREA MIGDAL HAEMEK ISRAEL 23105



### Analytical flow chart of Heavy Metal

These samples were dissolved totally by pre-conditioning method according to below flow chart. (Cr<sup>6+</sup> test method excluded)

- Technician : JR Wang
- Supervisor: Troy Chang



This document is issued by the Company subject to its General Conditions of Service printed overleaf, available on request or accessible at <http://www.sgs.com/en/Terms-and-Conditions.aspx> and, for electronic format documents, subject to Terms and Conditions for Electronic Documents at <http://www.sgs.com/en/Terms-and-Conditions/Termse-Document.aspx>. Attention is drawn to the limitation of liability, indemnification and jurisdiction issues defined therein. Any holder of this document is advised that information contained hereon reflects the Company's findings at the time of its intervention only and within the limits of client's instruction, if any. The Company's sole responsibility is to its Client and this document does not exonerate parties to a transaction from exercising all their rights and obligations under the transaction documents. This document cannot be reproduced, except in full, without prior written approval of the Company. Any unauthorized alteration, forgery or falsification of the content or appearance of this document is unlawful and offenders may be prosecuted to the fullest extent of the law. Unless otherwise stated the results shown in this test report refer only to the sample(s) tested.

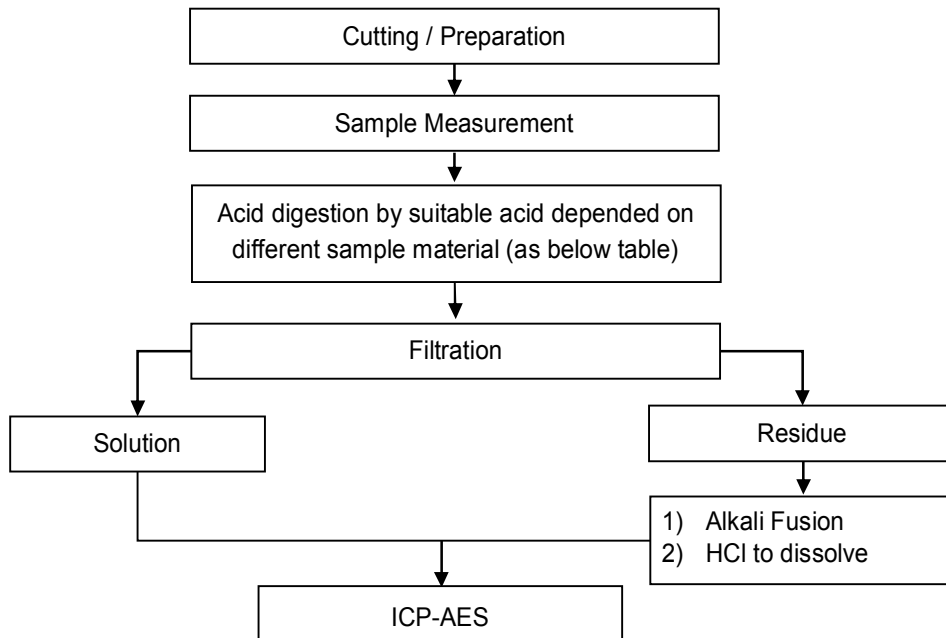
TOWERJAZZ SEMICONDUCTOR  
 RAMAT GAVRIEL INDUSTRIAL AREA MIGDAL HAEMEK ISRAEL 23105



These samples were dissolved totally by pre-conditioning method according to below flow chart.

- Technician: JR Wang
- Supervisor: Troy Chang

### Flow Chart of digestion for the elements analysis performed by ICP-AES



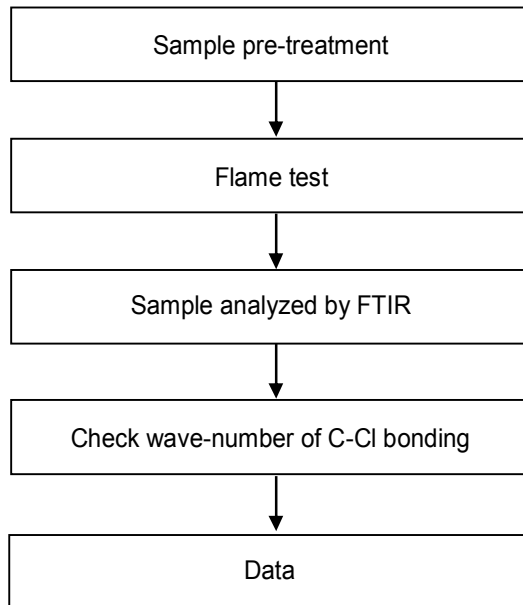
Steel, copper, aluminum, solder	Aqua regia, HNO <sub>3</sub> , HCl, HF, H <sub>2</sub> O <sub>2</sub>
Glass	HNO <sub>3</sub> /HF
Gold, platinum, palladium, ceramic	Aqua regia
Silver	HNO <sub>3</sub>
Plastic	H <sub>2</sub> SO <sub>4</sub> , H <sub>2</sub> O <sub>2</sub> , HNO <sub>3</sub> , HCl
Others	Added appropriate reagent to total digestion

TOWERJAZZ SEMICONDUCTOR  
 RAMAT GAVRIEL INDUSTRIAL AREA MIGDAL HAEMEK ISRAEL 23105



### Analysis flow chart - PVC

- Technician: Yaling Tu
- Supervisor: Troy Chang



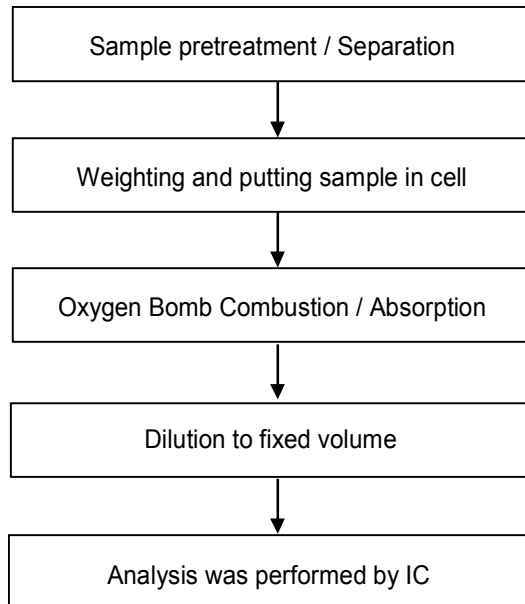
This document is issued by the Company subject to its General Conditions of Service printed overleaf, available on request or accessible at <http://www.sgs.com/en/Terms-and-Conditions.aspx> and, for electronic format documents, subject to Terms and Conditions for Electronic Documents at <http://www.sgs.com/en/Terms-and-Conditions/Termse-Document.aspx>. Attention is drawn to the limitation of liability, indemnification and jurisdiction issues defined therein. Any holder of this document is advised that information contained hereon reflects the Company's findings at the time of its intervention only and within the limits of client's instruction, if any. The Company's sole responsibility is to its Client and this document does not exonerate parties to a transaction from exercising all their rights and obligations under the transaction documents. This document cannot be reproduced, except in full, without prior written approval of the Company. Any unauthorized alteration, forgery or falsification of the content or appearance of this document is unlawful and offenders may be prosecuted to the fullest extent of the law. Unless otherwise stated the results shown in this test report refer only to the sample(s) tested.

TOWERJAZZ SEMICONDUCTOR  
RAMAT GAVRIEL INDUSTRIAL AREA MIGDAL HAEMEK ISRAEL 23105



### Analytical flow chart - Halogen

- Technician: Rita Chen
- Supervisor: Troy Chang

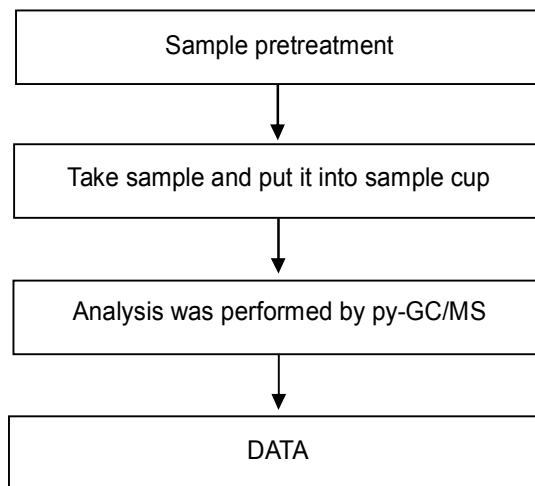


TOWERJAZZ SEMICONDUCTOR  
RAMAT GAVRIEL INDUSTRIAL AREA MIGDAL HAEMEK ISRAEL 23105



### Analytical flow chart - Red phosphorus

- Technician: Yaling Tu
- Supervisor: Troy Chang





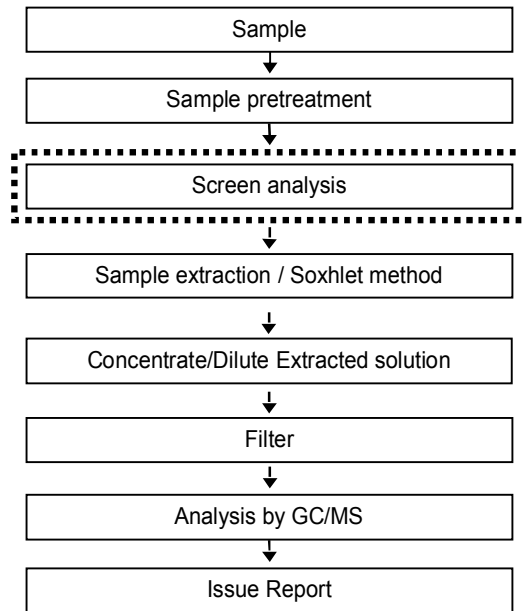
TOWERJAZZ SEMICONDUCTOR  
 RAMAT GAVRIEL INDUSTRIAL AREA MIGDAL HAEMEK ISRAEL 23105



### Analytical flow chart - TBBP-A-bis

- Technician: Yaling Tu
- Supervisor: Troy Chang

First testing process    —————>  
 Optional screen process    ······  
 Confirmation process    - · - ·>



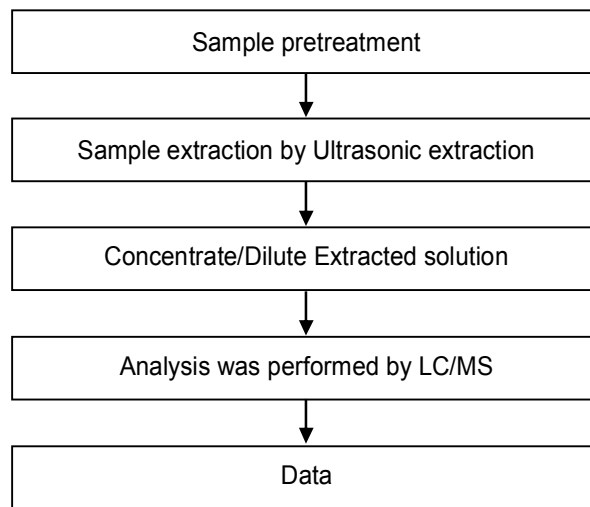
This document is issued by the Company subject to its General Conditions of Service printed overleaf, available on request or accessible at <http://www.sgs.com/en/Terms-and-Conditions.aspx> and, for electronic format documents, subject to Terms and Conditions for Electronic Documents at <http://www.sgs.com/en/Terms-and-Conditions/Termse-Documents.aspx>. Attention is drawn to the limitation of liability, indemnification and jurisdiction issues defined therein. Any holder of this document is advised that information contained hereon reflects the Company's findings at the time of its intervention only and within the limits of client's instruction, if any. The Company's sole responsibility is to its Client and this document does not exonerate parties to a transaction from exercising all their rights and obligations under the transaction documents. This document cannot be reproduced, except in full, without prior written approval of the Company. Any unauthorized alteration, forgery or falsification of the content or appearance of this document is unlawful and offenders may be prosecuted to the fullest extent of the law. Unless otherwise stated the results shown in this test report refer only to the sample(s) tested.

TOWERJAZZ SEMICONDUCTOR  
RAMAT GAVRIEL INDUSTRIAL AREA MIGDAL HAEMEK ISRAEL 23105



### Analytical flow chart - TBBP-A

- Technician: Yaling Tu
- Supervisor: Troy Chang



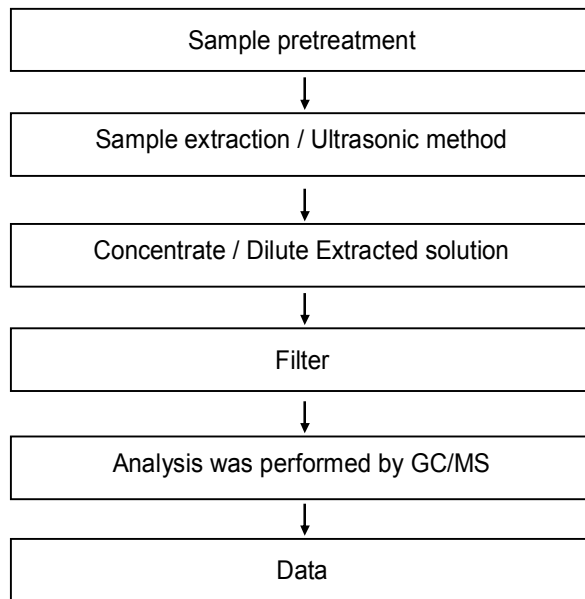
This document is issued by the Company subject to its General Conditions of Service printed overleaf, available on request or accessible at <http://www.sgs.com/en/Terms-and-Conditions.aspx> and, for electronic format documents, subject to Terms and Conditions for Electronic Documents at <http://www.sgs.com/en/Terms-and-Conditions/Termse-Document.aspx>. Attention is drawn to the limitation of liability, indemnification and jurisdiction issues defined therein. Any holder of this document is advised that information contained hereon reflects the Company's findings at the time of its intervention only and within the limits of client's instruction, if any. The Company's sole responsibility is to its Client and this document does not exonerate parties to a transaction from exercising all their rights and obligations under the transaction documents. This document cannot be reproduced, except in full, without prior written approval of the Company. Any unauthorized alteration, forgery or falsification of the content or appearance of this document is unlawful and offenders may be prosecuted to the fullest extent of the law. Unless otherwise stated the results shown in this test report refer only to the sample(s) tested.

TOWERJAZZ SEMICONDUCTOR  
 RAMAT GAVRIEL INDUSTRIAL AREA MIGDAL HAEMEK ISRAEL 23105



**Analytical flow chart - DBBT**

- Technician: Yaling Tu
- Supervisor: Troy Chang



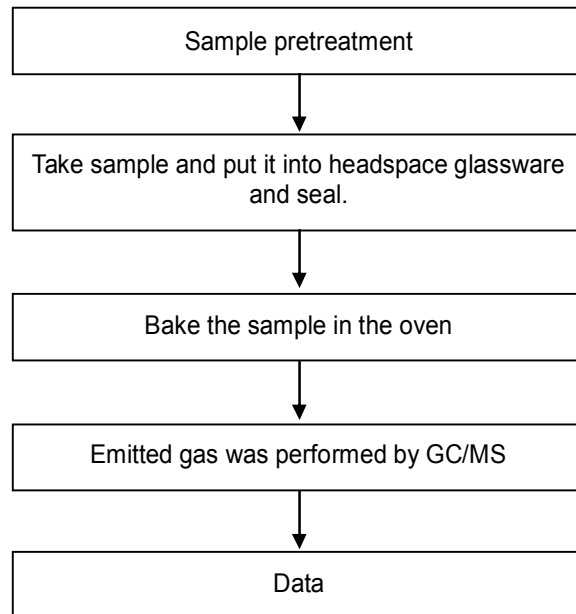
This document is issued by the Company subject to its General Conditions of Service printed overleaf, available on request or accessible at <http://www.sgs.com/en/Terms-and-Conditions.aspx> and, for electronic format documents, subject to Terms and Conditions for Electronic Documents at <http://www.sgs.com/en/Terms-and-Conditions/Termse-Document.aspx>. Attention is drawn to the limitation of liability, indemnification and jurisdiction issues defined therein. Any holder of this document is advised that information contained hereon reflects the Company's findings at the time of its intervention only and within the limits of client's instruction, if any. The Company's sole responsibility is to its Client and this document does not exonerate parties to a transaction from exercising all their rights and obligations under the transaction documents. This document cannot be reproduced, except in full, without prior written approval of the Company. Any unauthorized alteration, forgery or falsification of the content or appearance of this document is unlawful and offenders may be prosecuted to the fullest extent of the law. Unless otherwise stated the results shown in this test report refer only to the sample(s) tested.

TOWERJAZZ SEMICONDUCTOR  
RAMAT GAVRIEL INDUSTRIAL AREA MIGDAL HAEMEK ISRAEL 23105



### Analytical flow chart - volatile organic compounds (VOCs)

- Technician : Chun Wu
  - Supervisor : Shinjyh Chen
- 【 Reference method : US EPA 5021, 5021A 】

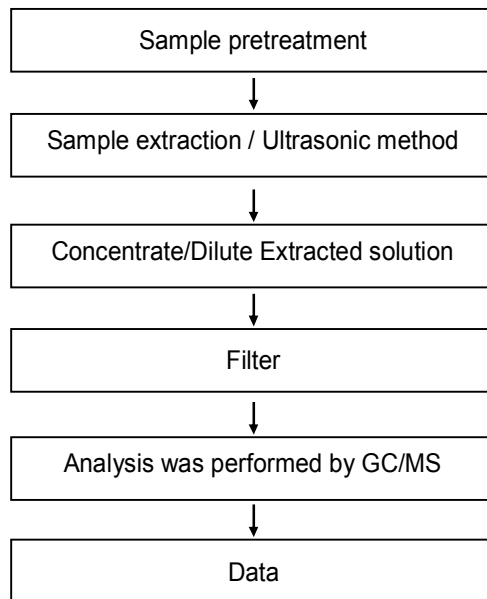


TOWERJAZZ SEMICONDUCTOR  
 RAMAT GAVRIEL INDUSTRIAL AREA MIGDAL HAEMEK ISRAEL 23105



**Analytical flow chart - Dimethyl Fumarate**

- Technician: Yaling Tu
- Supervisor: Troy Chang



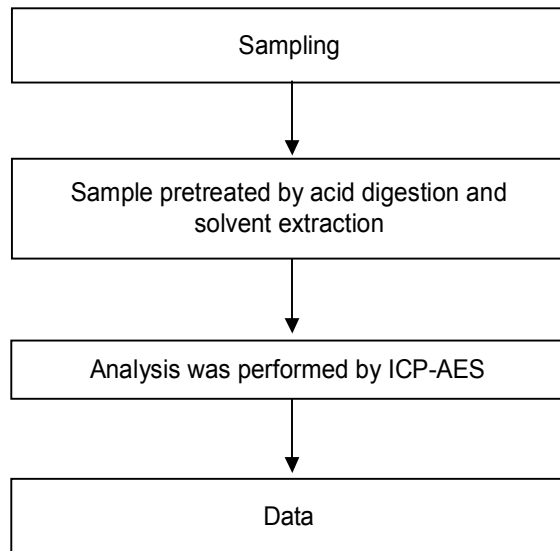
This document is issued by the Company subject to its General Conditions of Service printed overleaf, available on request or accessible at <http://www.sgs.com/en/Terms-and-Conditions.aspx> and, for electronic format documents, subject to Terms and Conditions for Electronic Documents at <http://www.sgs.com/en/Terms-and-Conditions/Termse-Documents.aspx>. Attention is drawn to the limitation of liability, indemnification and jurisdiction issues defined therein. Any holder of this document is advised that information contained hereon reflects the Company's findings at the time of its intervention only and within the limits of client's instruction, if any. The Company's sole responsibility is to its Client and this document does not exonerate parties to a transaction from exercising all their rights and obligations under the transaction documents. This document cannot be reproduced, except in full, without prior written approval of the Company. Any unauthorized alteration, forgery or falsification of the content or appearance of this document is unlawful and offenders may be prosecuted to the fullest extent of the law. Unless otherwise stated the results shown in this test report refer only to the sample(s) tested.

TOWERJAZZ SEMICONDUCTOR  
 RAMAT GAVRIEL INDUSTRIAL AREA MIGDAL HAEMEK ISRAEL 23105



**Analytical flow chart - Cobalt dichloride**

- Technician: JR Wang
- Supervisor: Troy Chang



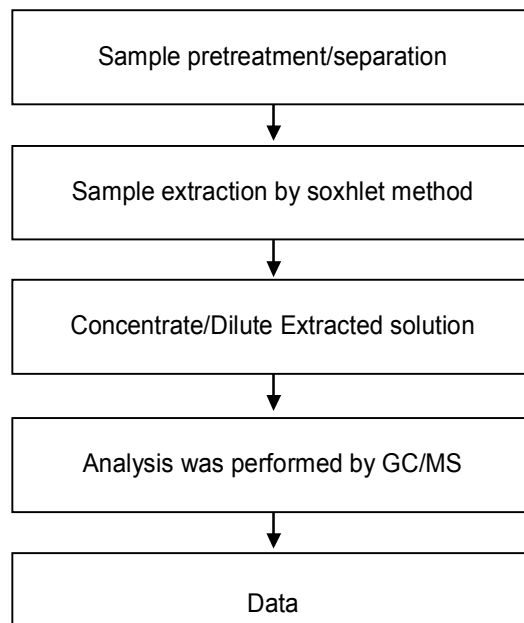
This document is issued by the Company subject to its General Conditions of Service printed overleaf, available on request or accessible at <http://www.sgs.com/en/Terms-and-Conditions.aspx> and, for electronic format documents, subject to Terms and Conditions for Electronic Documents at <http://www.sgs.com/en/Terms-and-Conditions/Termse-Documents.aspx>. Attention is drawn to the limitation of liability, indemnification and jurisdiction issues defined therein. Any holder of this document is advised that information contained hereon reflects the Company's findings at the time of its intervention only and within the limits of client's instruction, if any. The Company's sole responsibility is to its Client and this document does not exonerate parties to a transaction from exercising all their rights and obligations under the transaction documents. This document cannot be reproduced, except in full, without prior written approval of the Company. Any unauthorized alteration, forgery or falsification of the content or appearance of this document is unlawful and offenders may be prosecuted to the fullest extent of the law. Unless otherwise stated the results shown in this test report refer only to the sample(s) tested.

TOWERJAZZ SEMICONDUCTOR  
 RAMAT GAVRIEL INDUSTRIAL AREA MIGDAL HAEMEK ISRAEL 23105



**Analytical flow chart - Benzotriazole**

- Technician: Yaling Tu
- Supervisor: Troy Chang



This document is issued by the Company subject to its General Conditions of Service printed overleaf, available on request or accessible at <http://www.sgs.com/en/Terms-and-Conditions.aspx> and, for electronic format documents, subject to Terms and Conditions for Electronic Documents at <http://www.sgs.com/en/Terms-and-Conditions/Termse-Documents.aspx>. Attention is drawn to the limitation of liability, indemnification and jurisdiction issues defined therein. Any holder of this document is advised that information contained hereon reflects the Company's findings at the time of its intervention only and within the limits of client's instruction, if any. The Company's sole responsibility is to its Client and this document does not exonerate parties to a transaction from exercising all their rights and obligations under the transaction documents. This document cannot be reproduced, except in full, without prior written approval of the Company. Any unauthorized alteration, forgery or falsification of the content or appearance of this document is unlawful and offenders may be prosecuted to the fullest extent of the law. Unless otherwise stated the results shown in this test report refer only to the sample(s) tested.

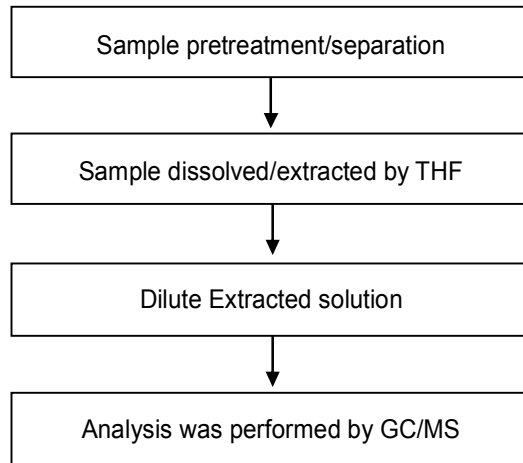
TOWERJAZZ SEMICONDUCTOR  
RAMAT GAVRIEL INDUSTRIAL AREA MIGDAL HAEMEK ISRAEL 23105



### Analytical flow chart - Phthalate

- Technician: Andy Hsu
- Supervisor: Troy Chang

**【Test method: IEC 62321-8】**



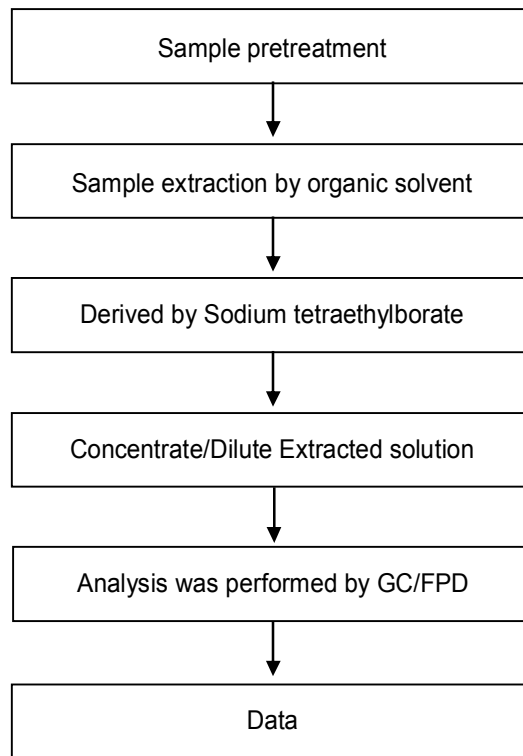


TOWERJAZZ SEMICONDUCTOR  
RAMAT GAVRIEL INDUSTRIAL AREA MIGDAL HAEMEK ISRAEL 23105



### Analytical flow chart - Organic-Tin

- Technician: Yaling Tu
- Supervisor: Troy Chang



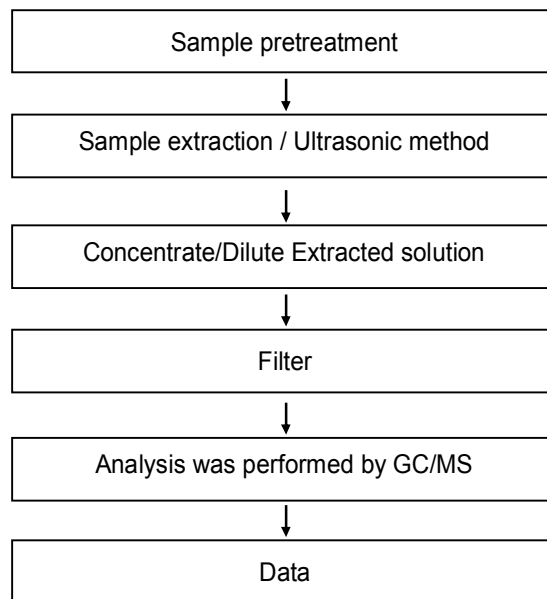
This document is issued by the Company subject to its General Conditions of Service printed overleaf, available on request or accessible at <http://www.sgs.com/en/Terms-and-Conditions.aspx> and, for electronic format documents, subject to Terms and Conditions for Electronic Documents at <http://www.sgs.com/en/Terms-and-Conditions/Termse-Document.aspx>. Attention is drawn to the limitation of liability, indemnification and jurisdiction issues defined therein. Any holder of this document is advised that information contained hereon reflects the Company's findings at the time of its intervention only and within the limits of client's instruction, if any. The Company's sole responsibility is to its Client and this document does not exonerate parties to a transaction from exercising all their rights and obligations under the transaction documents. This document cannot be reproduced, except in full, without prior written approval of the Company. Any unauthorized alteration, forgery or falsification of the content or appearance of this document is unlawful and offenders may be prosecuted to the fullest extent of the law. Unless otherwise stated the results shown in this test report refer only to the sample(s) tested.

TOWERJAZZ SEMICONDUCTOR  
RAMAT GAVRIEL INDUSTRIAL AREA MIGDAL HAEMEK ISRAEL 23105



### Analytical flow chart - HBCDD

- Technician: Yaling Tu
- Supervisor: Troy Chang



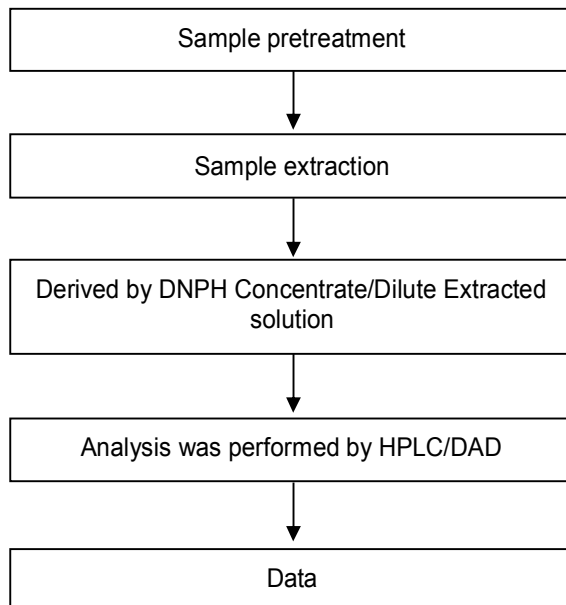
This document is issued by the Company subject to its General Conditions of Service printed overleaf, available on request or accessible at <http://www.sgs.com/en/Terms-and-Conditions.aspx> and, for electronic format documents, subject to Terms and Conditions for Electronic Documents at <http://www.sgs.com/en/Terms-and-Conditions/Termse-Document.aspx>. Attention is drawn to the limitation of liability, indemnification and jurisdiction issues defined therein. Any holder of this document is advised that information contained hereon reflects the Company's findings at the time of its intervention only and within the limits of client's instruction, if any. The Company's sole responsibility is to its Client and this document does not exonerate parties to a transaction from exercising all their rights and obligations under the transaction documents. This document cannot be reproduced, except in full, without prior written approval of the Company. Any unauthorized alteration, forgery or falsification of the content or appearance of this document is unlawful and offenders may be prosecuted to the fullest extent of the law. Unless otherwise stated the results shown in this test report refer only to the sample(s) tested.

TOWERJAZZ SEMICONDUCTOR  
 RAMAT GAVRIEL INDUSTRIAL AREA MIGDAL HAEMEK ISRAEL 23105



**Analytical flow chart - Formaldehyde**

- Technician: Yaling Tu
- Supervisor: Troy Chang



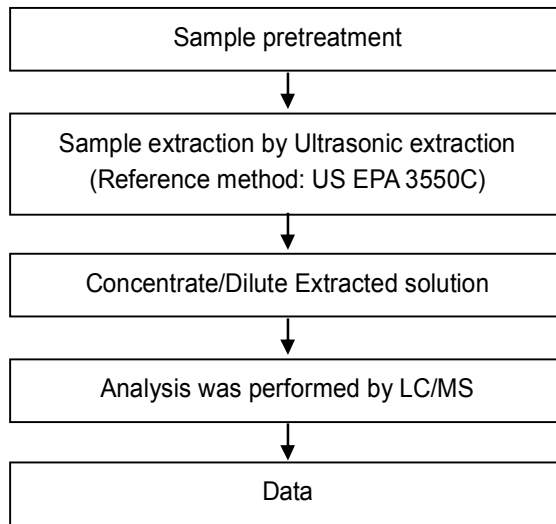
This document is issued by the Company subject to its General Conditions of Service printed overleaf, available on request or accessible at <http://www.sgs.com/en/Terms-and-Conditions.aspx> and, for electronic format documents, subject to Terms and Conditions for Electronic Documents at <http://www.sgs.com/en/Terms-and-Conditions/Termse-Document.aspx>. Attention is drawn to the limitation of liability, indemnification and jurisdiction issues defined therein. Any holder of this document is advised that information contained hereon reflects the Company's findings at the time of its intervention only and within the limits of client's instruction, if any. The Company's sole responsibility is to its Client and this document does not exonerate parties to a transaction from exercising all their rights and obligations under the transaction documents. This document cannot be reproduced, except in full, without prior written approval of the Company. Any unauthorized alteration, forgery or falsification of the content or appearance of this document is unlawful and offenders may be prosecuted to the fullest extent of the law. Unless otherwise stated the results shown in this test report refer only to the sample(s) tested.

TOWERJAZZ SEMICONDUCTOR  
 RAMAT GAVRIEL INDUSTRIAL AREA MIGDAL HAEMEK ISRAEL 23105



**Analytical flow chart - PFOA/PFOS**

- Technician: Yaling Tu
- Supervisor: Troy Chang



This document is issued by the Company subject to its General Conditions of Service printed overleaf, available on request or accessible at <http://www.sgs.com/en/Terms-and-Conditions.aspx> and, for electronic format documents, subject to Terms and Conditions for Electronic Documents at <http://www.sgs.com/en/Terms-and-Conditions/Termse-Document.aspx>. Attention is drawn to the limitation of liability, indemnification and jurisdiction issues defined therein. Any holder of this document is advised that information contained hereon reflects the Company's findings at the time of its intervention only and within the limits of client's instruction, if any. The Company's sole responsibility is to its Client and this document does not exonerate parties to a transaction from exercising all their rights and obligations under the transaction documents. This document cannot be reproduced, except in full, without prior written approval of the Company. Any unauthorized alteration, forgery or falsification of the content or appearance of this document is unlawful and offenders may be prosecuted to the fullest extent of the law. Unless otherwise stated the results shown in this test report refer only to the sample(s) tested.

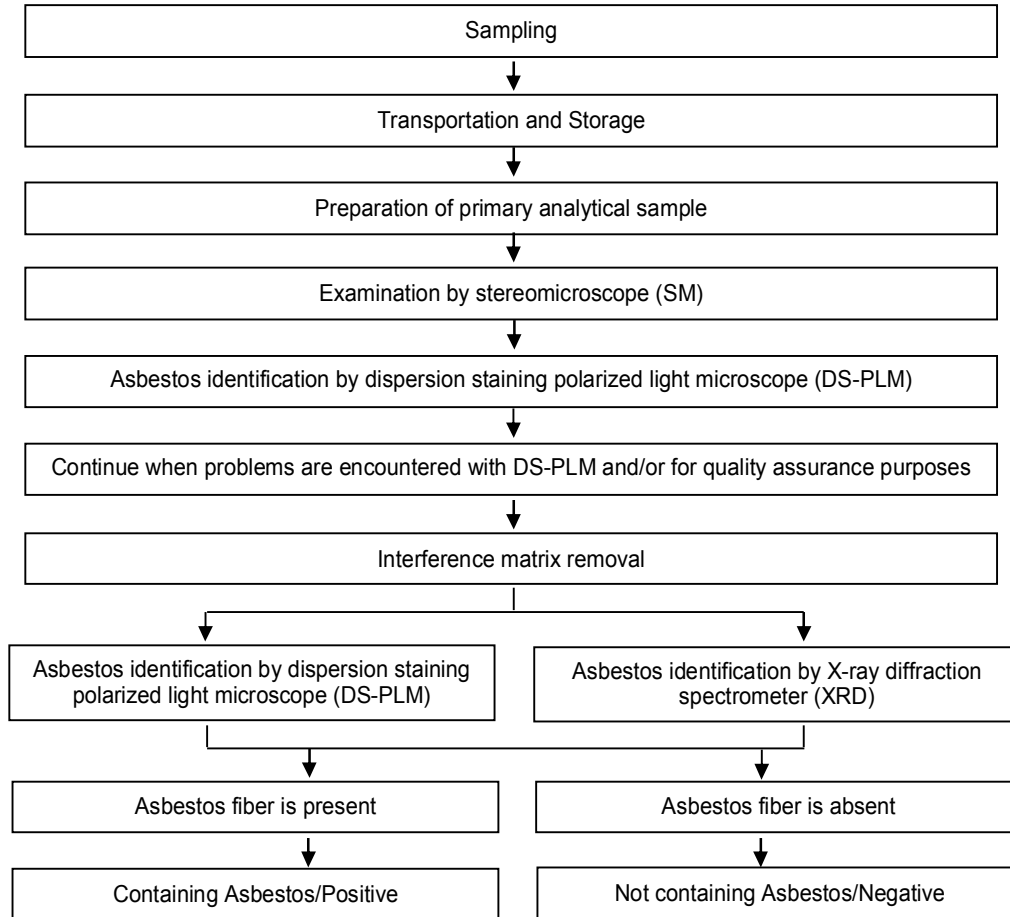
TOWERJAZZ SEMICONDUCTOR  
 RAMAT GAVRIEL INDUSTRIAL AREA MIGDAL HAEMEK ISRAEL 23105



**Analysis flow chart for determination of Asbestos**

- Technician: Victor Kao
- Supervisor: Wendy Wei

**[ Reference method: EPA 600/R-93/116 ]**



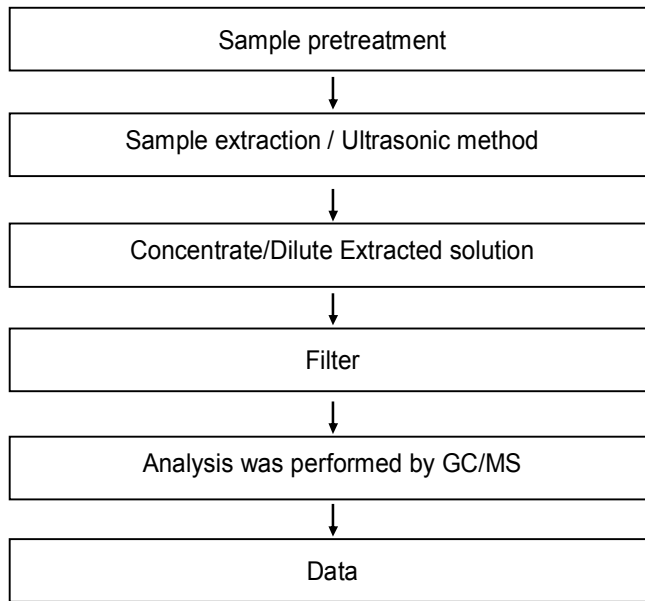
This document is issued by the Company subject to its General Conditions of Service printed overleaf, available on request or accessible at <http://www.sgs.com/en/Terms-and-Conditions.aspx> and, for electronic format documents, subject to Terms and Conditions for Electronic Documents at <http://www.sgs.com/en/Terms-and-Conditions/Termse-Documents.aspx>. Attention is drawn to the limitation of liability, indemnification and jurisdiction issues defined therein. Any holder of this document is advised that information contained hereon reflects the Company's findings at the time of its intervention only and within the limits of client's instruction, if any. The Company's sole responsibility is to its Client and this document does not exonerate parties to a transaction from exercising all their rights and obligations under the transaction documents. This document cannot be reproduced, except in full, without prior written approval of the Company. Any unauthorized alteration, forgery or falsification of the content or appearance of this document is unlawful and offenders may be prosecuted to the fullest extent of the law. Unless otherwise stated the results shown in this test report refer only to the sample(s) tested.

TOWERJAZZ SEMICONDUCTOR  
 RAMAT GAVRIEL INDUSTRIAL AREA MIGDAL HAEMEK ISRAEL 23105



**Analytical flow chart - Chlorinated Paraffins**

- Technician: Yaling Tu
- Supervisor: Troy Chang



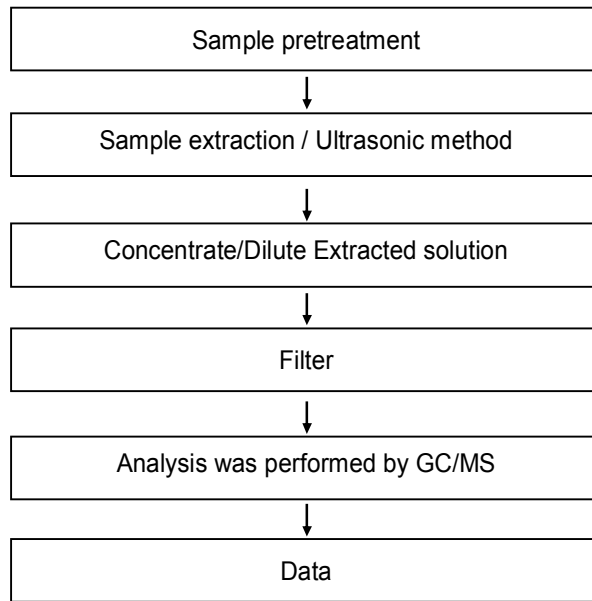
This document is issued by the Company subject to its General Conditions of Service printed overleaf, available on request or accessible at <http://www.sgs.com/en/Terms-and-Conditions.aspx> and, for electronic format documents, subject to Terms and Conditions for Electronic Documents at <http://www.sgs.com/en/Terms-and-Conditions/Termse-Document.aspx>. Attention is drawn to the limitation of liability, indemnification and jurisdiction issues defined therein. Any holder of this document is advised that information contained hereon reflects the Company's findings at the time of its intervention only and within the limits of client's instruction, if any. The Company's sole responsibility is to its Client and this document does not exonerate parties to a transaction from exercising all their rights and obligations under the transaction documents. This document cannot be reproduced, except in full, without prior written approval of the Company. Any unauthorized alteration, forgery or falsification of the content or appearance of this document is unlawful and offenders may be prosecuted to the fullest extent of the law. Unless otherwise stated the results shown in this test report refer only to the sample(s) tested.

TOWERJAZZ SEMICONDUCTOR  
 RAMAT GAVRIEL INDUSTRIAL AREA MIGDAL HAEMEK ISRAEL 23105



### Analytical flow chart - PCNs

- Technician: Yaling Tu
- Supervisor: Troy Chang



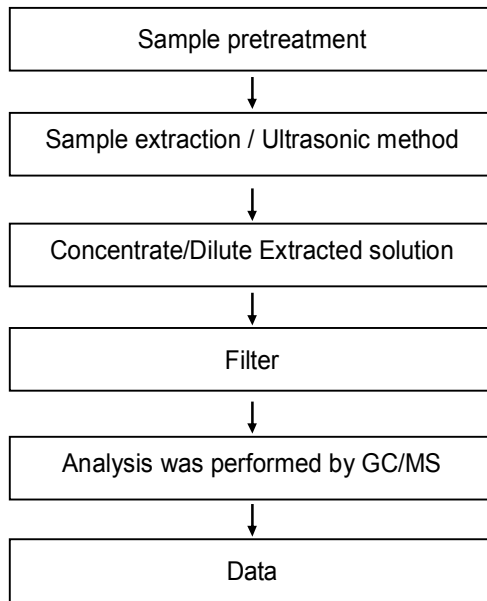
This document is issued by the Company subject to its General Conditions of Service printed overleaf, available on request or accessible at <http://www.sgs.com/en/Terms-and-Conditions.aspx> and, for electronic format documents, subject to Terms and Conditions for Electronic Documents at <http://www.sgs.com/en/Terms-and-Conditions/Termse-Document.aspx>. Attention is drawn to the limitation of liability, indemnification and jurisdiction issues defined therein. Any holder of this document is advised that information contained hereon reflects the Company's findings at the time of its intervention only and within the limits of client's instruction, if any. The Company's sole responsibility is to its Client and this document does not exonerate parties to a transaction from exercising all their rights and obligations under the transaction documents. This document cannot be reproduced, except in full, without prior written approval of the Company. Any unauthorized alteration, forgery or falsification of the content or appearance of this document is unlawful and offenders may be prosecuted to the fullest extent of the law. Unless otherwise stated the results shown in this test report refer only to the sample(s) tested.

TOWERJAZZ SEMICONDUCTOR  
 RAMAT GAVRIEL INDUSTRIAL AREA MIGDAL HAEMEK ISRAEL 23105



### Analytical flow chart - PCTs

- Technician: Barry Tseng
- Supervisor: Troy Chang



This document is issued by the Company subject to its General Conditions of Service printed overleaf, available on request or accessible at <http://www.sgs.com/en/Terms-and-Conditions.aspx> and, for electronic format documents, subject to Terms and Conditions for Electronic Documents at <http://www.sgs.com/en/Terms-and-Conditions/Termse-Document.aspx>. Attention is drawn to the limitation of liability, indemnification and jurisdiction issues defined therein. Any holder of this document is advised that information contained hereon reflects the Company's findings at the time of its intervention only and within the limits of client's instruction, if any. The Company's sole responsibility is to its Client and this document does not exonerate parties to a transaction from exercising all their rights and obligations under the transaction documents. This document cannot be reproduced, except in full, without prior written approval of the Company. Any unauthorized alteration, forgery or falsification of the content or appearance of this document is unlawful and offenders may be prosecuted to the fullest extent of the law. Unless otherwise stated the results shown in this test report refer only to the sample(s) tested.

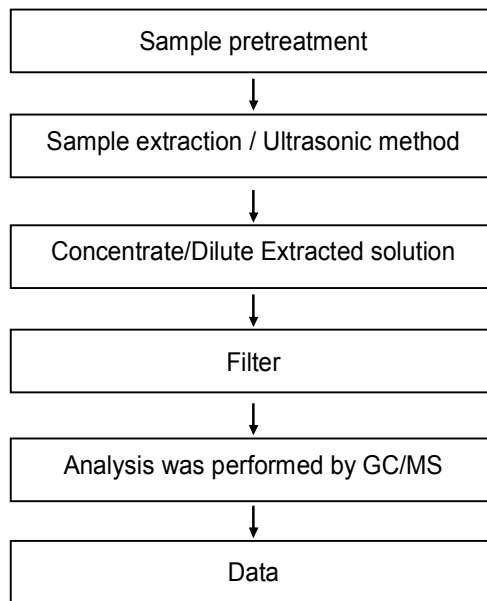


TOWERJAZZ SEMICONDUCTOR  
RAMAT GAVRIEL INDUSTRIAL AREA MIGDAL HAEMEK ISRAEL 23105



### Analytical flow chart - PCBs

- Technician: Yaling Tu
- Supervisor: Troy Chang

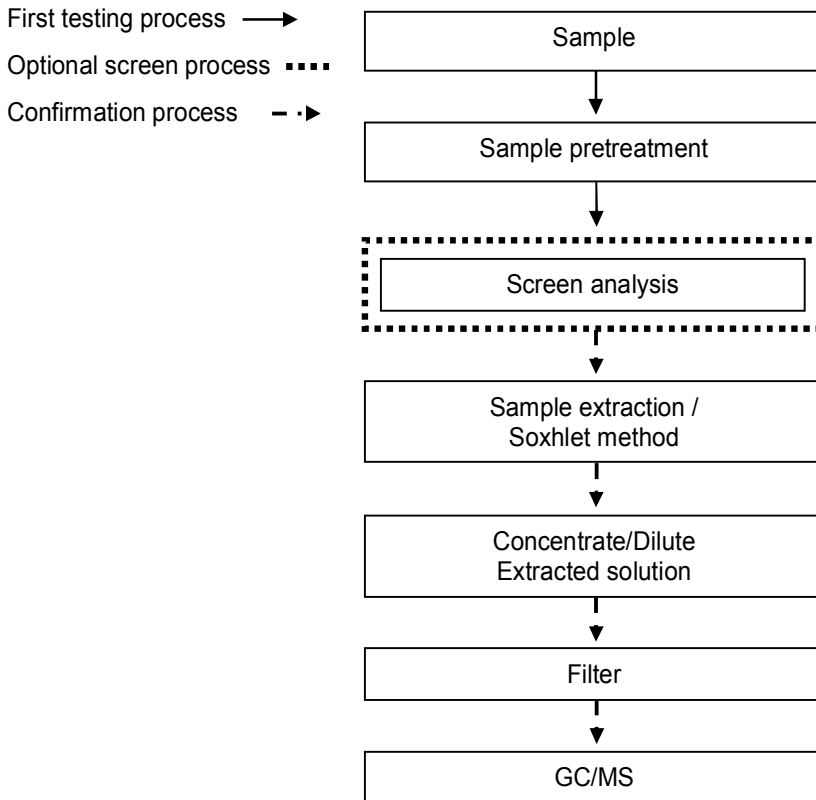


TOWERJAZZ SEMICONDUCTOR  
 RAMAT GAVRIEL INDUSTRIAL AREA MIGDAL HAEMEK ISRAEL 23105



### Analytical flow chart – PBB / PBDE

- Technician : Yaling Tu
- Supervisor: Troy Chang



This document is issued by the Company subject to its General Conditions of Service printed overleaf, available on request or accessible at <http://www.sgs.com/en/Terms-and-Conditions.aspx> and, for electronic format documents, subject to Terms and Conditions for Electronic Documents at <http://www.sgs.com/en/Terms-and-Conditions/Termse-Document.aspx>. Attention is drawn to the limitation of liability, indemnification and jurisdiction issues defined therein. Any holder of this document is advised that information contained hereon reflects the Company's findings at the time of its intervention only and within the limits of client's instruction, if any. The Company's sole responsibility is to its Client and this document does not exonerate parties to a transaction from exercising all their rights and obligations under the transaction documents. This document cannot be reproduced, except in full, without prior written approval of the Company. Any unauthorized alteration, forgery or falsification of the content or appearance of this document is unlawful and offenders may be prosecuted to the fullest extent of the law. Unless otherwise stated the results shown in this test report refer only to the sample(s) tested.

## Test Report

No. : CE/2018/10969A

Date : 2018/01/10

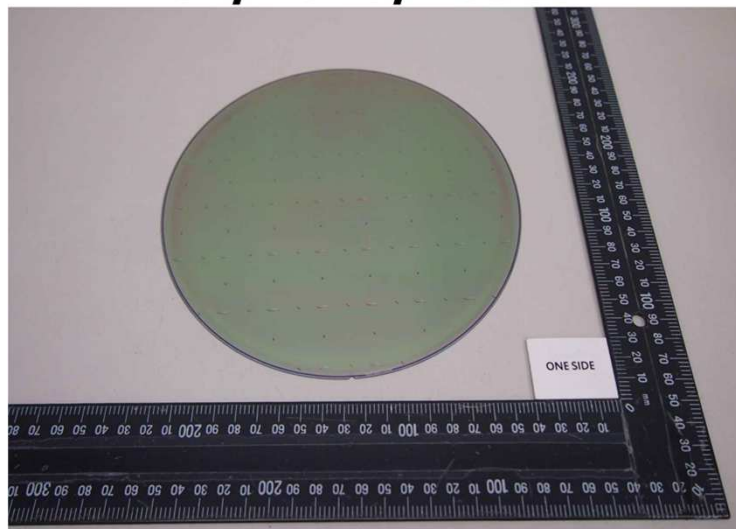
Page : 43 of 43

TOWERJAZZ SEMICONDUCTOR  
RAMAT GAVRIEL INDUSTRIAL AREA MIGDAL HAEMEK ISRAEL 23105

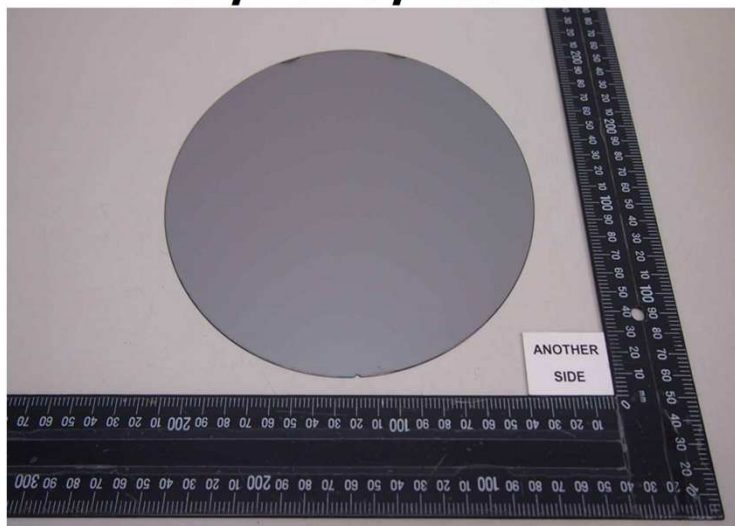


\* The tested sample / part is marked by an arrow if it's shown on the photo. \*

### CE/2018/10969



### CE/2018/10969



\*\* End of Report \*\*

This document is issued by the Company subject to its General Conditions of Service printed overleaf, available on request or accessible at <http://www.sgs.com/en/Terms-and-Conditions.aspx> and, for electronic format documents, subject to Terms and Conditions for Electronic Documents at <http://www.sgs.com/en/Terms-and-Conditions/Termse-Document.aspx>. Attention is drawn to the limitation of liability, indemnification and jurisdiction issues defined therein. Any holder of this document is advised that information contained hereon reflects the Company's findings at the time of its intervention only and within the limits of client's instruction, if any. The Company's sole responsibility is to its Client and this document does not exonerate parties to a transaction from exercising all their rights and obligations under the transaction documents. This document cannot be reproduced, except in full, without prior written approval of the Company. Any unauthorized alteration, forgery or falsification of the content or appearance of this document is unlawful and offenders may be prosecuted to the fullest extent of the law. Unless otherwise stated the results shown in this test report refer only to the sample(s) tested.